



# Bavarian Statistics 2022



## Publication service

The Bavarian State Office for Statistics issues more than 400 publications annually. The current list of publications is available on the Internet as a file but can also be provided free of charge in printed form.

### Free of charge

is the download of most publications, e.g. statistical reports (PDF or Excel format).

### Subject to charge

are all print versions (also of statistical reports), data carriers and selected files (e.g. of directories, of contributions, of the yearbook)

### Publication service



All publications are available on the Internet at [www.statistik.bayern.de/produkte](http://www.statistik.bayern.de/produkte)

## Explanation of symbols

- 0 less than half of 1 in the last digit occupied, but more than zero
- no figures or magnitude zero
- / no data because the numerical value is not sufficiently reliable
- numerical value unknown or not to be disclosed
- ... data will be available later
- x cell blocked for logical reasons
- ( ) limited informational value because the numerical value is of limited statistical reliability
- p provisional numerical value
- r corrected numerical value
- s estimated numerical value
- D average
- ‡ corresponds to

## Rounding

In general totals have been rounded and therefore may not sum. As a result minor deviations from the reported totals may occur when individual figures are added up. When totals are shown as a percent-age, the sum of the individual figures may not be 100% due to rounding. In general the sum of percentages is not made to be 100%.

## Abbreviations

€	euro
EU	European Union
ALC	association of local councils
ha	hectare (10,000 m <sup>2</sup> )
hl	hectolitres (100 litres)
mill.	million
%	percent
km <sup>2</sup>	square kilometre
m <sup>2</sup>	square metre
pcs.	piece
TJ	10 <sup>12</sup> Joules
t	tonne

## About us

### Bavaria Statistics 2022

Essential Bavarian structural data from the Bavarian Statistical Yearbook 2022

**Publication frequency:** annually

**Deadline for publication:** 28 October 2022

### Office in charge of publishing, printing and distribution

Bayerisches Landesamt für Statistik  
Nürnbergger Straße 95  
90762 Fürth

### Picture credits

Bayerisches Landesamt für Statistik

### Paper

Printed on environmentally friendly paper bleached without chlorine

### Order number

Z21011 202200

### Price

Single issue free of charge (plus delivery charges)  
PDF-file free of charge

### Distribution

E-mail [vertrieb@statistik.bayern.de](mailto:vertrieb@statistik.bayern.de)  
Phone +49 911 98208-6311  
Fax +49 911 98208-6638

### Information service

E-mail [info@statistik.bayern.de](mailto:info@statistik.bayern.de)  
Phone +49 911 98208-6563  
Fax +49 911 98208-6573

© Bayerisches Landesamt für Statistik, Fürth 2022

Reproduction and distribution, also partially, is permitted provided the source is named.

**Please note:** This publication is part of the public relations activities of the Bavarian Government. It may not be used by political parties, electoral canvassers or counting assistants for the purpose of election campaigning during the period of five months prior to an election. This applies to state, national, local and European elections. During this time its distribution at electoral events, at party information stands and inserting, printing and affixing party political information or advertising material is strictly prohibited. It is also illegal to pass on such information to third parties for the purpose of electoral canvassing. Even if there is no forthcoming election, the publication may not be used in ways that could be interpreted as the state government favouring individual political groups. Parties are allowed to use the publication to inform their own members.

# Free State of Bavaria including administrative districts, independent cities and counties


Territorial status: 31 December 2000

## Administrative districts and neighbouring countries of Bavaria



Swabia 7 Name and code of administrative district  
AUSTRIA Name of neighbouring country

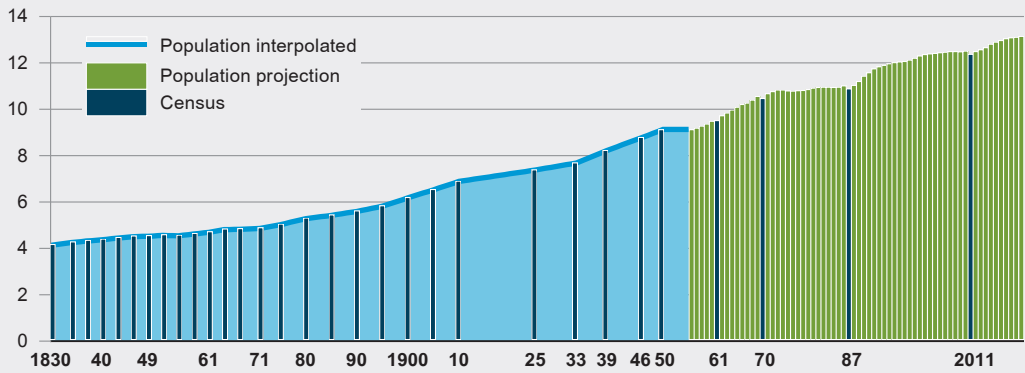
— State border  
— Administrative district borders  
— Borders of independent cities and counties  
**MÜNCHEN** State capital  
**ANSBACH** Seat of the government of an administrative district

**Bamberg 461** Name and code of independent city or county  
• Seat of a county council  
*Karlstadt* Municipality with seat of a county council  
 Independent city

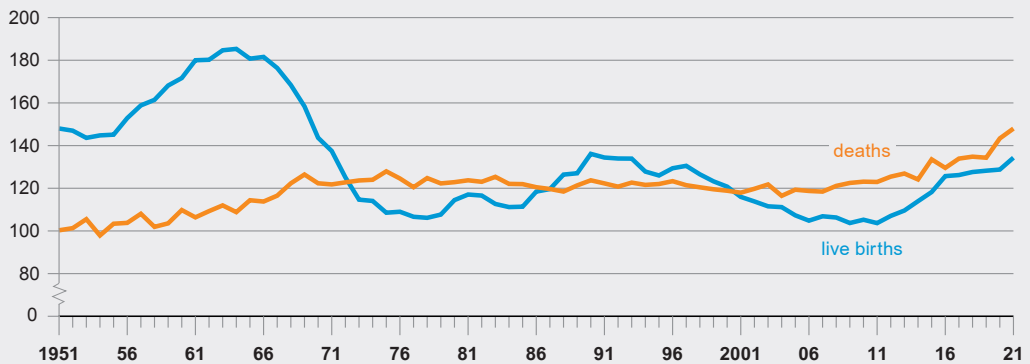
ser. no.	item	Unit	1980	1990	2000	2010	2020	2021
<b>Area and population</b>								
1	Area on 31 December .....	km <sup>2</sup>	70,551	70,554	70,548	70,550	70,542	70,542
2	Population on 31 December .....	quantity	10,928,151	11,448,823	12,230,255	12,538,696	13,140,183	13,176,989
3	of which male .....	quantity	5,228,969	5,555,722	5,974,283	6,158,439	6,512,595	6,532,222
4	married <sup>1)</sup> .....	quantity	5,249,789	5,550,259	5,474,486	5,183,925	5,722,509	5,680,765
	of which aged							
5	under 6 years .....	%	5.9	6.7	6.2	5.1	5.9	5.9
6	6 to under 15 years .....	%	12.1	9.2	10.1	8.7	8.0	8.1
7	15 to under 18 years .....	%	5.2	3.0	3.2	3.2	2.7	2.7
8	18 to under 25 years .....	%	11.2	10.8	7.8	8.4	7.7	7.5
9	25 to under 30 years .....	%	7.0	9.0	6.2	6.1	6.4	6.3
10	30 to under 40 years .....	%	13.6	14.9	17.3	12.4	13.4	13.4
11	40 to under 50 years .....	%	14.1	13.0	14.4	17.0	12.5	12.4
12	50 to under 65 years .....	%	15.7	18.4	18.6	19.5	22.8	22.7
13	65 years or over .....	%	15.2	15.0	16.2	19.5	20.7	20.9
14	including foreigners .....	1,000	711	856	1,132	1,191	1,805	1,857
15	Population per km <sup>2</sup> .....	quantity	155	162	173	178	186	187
16	Private households <sup>2)</sup> .....	1,000	4,286	4,916	5,521	6,065	...	6,311
17	of which one-person households .....	1,000	1,237	1,673	1,946	2,412	...	2,527
18	multi-person households	1,000	3,048	3,243	3,575	3,653	...	3,784
	of which							
19	2 people .....	1,000	1,204	1,434	1,759	1,956	...	2,089
20	3 or more people .....	1,000	1,845	1,809	1,816	1,697	...	1,695
21	Average household size .....	people	2.6	2.3	2.2	2.1	...	2.1
<b>Population dynamics</b>								
22	Marriages <sup>3)</sup> .....	quantity	66,368	74,387	63,038	59,092	61,138	59,670
23	Marriages per 1,000 inhabitants .....	quantity	6.1	6.6	5.2	4.7	4.7	4.5
24	Divorces <sup>4)</sup> .....	quantity	13,408	19,168	27,250	26,807	21,484	21,605
25	Divorces per 1,000 inhabitants .....	quantity	1.2	1.7	2.2	2.1	1.6	1.6
26	Live births .....	quantity	114,451	136,122	120,765	105,251	128,764	134,321
27	Live births per 1,000 inhabitants .....	quantity	10.5	12.0	9.9	8.4	9.8	10.2
28	Deaths .....	quantity	122,859	123,726	118,846	123,089	143,367	147,984
29	Deaths per 1,000 inhabitants .....	quantity	11.3	10.9	9.8	9.8	10.9	11.2
30	Surplus of birth s							
	or deaths respectively (-) .....	quantity	- 8,408	12,396	1,919	- 17,838	- 14,603	- 13,663
31	Immigration across the state border .....	quantity	233,676	406,818	289,307	258,314	323,001	354,847
32	Emigration across the state border .....	quantity	168,212	191,126	215,938	212,699	289,763	302,075
33	Immigration surplus .....	quantity	65,464	215,692	73,369	45,615	33,238	52,772
34	Naturalisations .....	quantity	8,704	11,823	20,622	12,021	20,192	23,158
<b>Public healthcare</b>								
35	Professional doctors in private practice on 31 December <sup>5)</sup> ...	quantity	11,351	14,944	21,417	24,478	28,263	28,716
36	Professional dentists in private practice on 31 Dezember <sup>6)</sup> ...	quantity	6,412	7,242	8,323	9,924	11,642	12,109
37	Public pharmacies on 31 December .....	quantity	2,827	3,278	3,431	3,430	3,020	2,967
38	Hospitals on 31 December <sup>7)</sup> .....	quantity	736	436	406	373	353	...
39	therein hospital beds <sup>8)</sup> .....	quantity	124,931	91,227	83,484	75,789	76,031	...
40	full-time doctors <sup>9)</sup> .....	quantity	12,530	•	16,740	22,747	31,405	...
41	nurses .....	quantity	41,686	•	61,836	62,171	77,136	...
	Deaths caused by ... per 100,000 inhabitants							
42	Diseases of the circulatory system in total <sup>10)</sup> .....	quantity	538.0	543.8	467.0	412.1	380.2	...
43	Malignant neoplasms .....	quantity	249.3	254.9	243.6	244.1	245.1	...
44	Diseases of the respiratory system .....	quantity	70.5	69.3	59.4	67.4	65.3	...
45	Diseases of the digestive system .....	quantity	60.2	49.1	45.7	49.9	49.8	...
46	Accidents of all kind .....	quantity	54.8	39.1	24.9	18.2	34.2	...
47	Suicide .....	quantity	20.6	17.6	16.1	14.1	11.6	...
<b>Education and culture</b>								
48	Volksschulen on 1 October .....	schools	2,832	2,813	2,858	3,166	3,289	3,294
49	(from 2012 primary schools .....	schoolchildren	948,543	750,320	858,128	665,334	636,972	641,807
50	and schools including years .....	teaching staff	42,328	44,902	48,088	44,185	44,550	44,305
	5–9 or 5–10 but excluding .....							
	Gymnasien)							

## Population since 1830 in millions

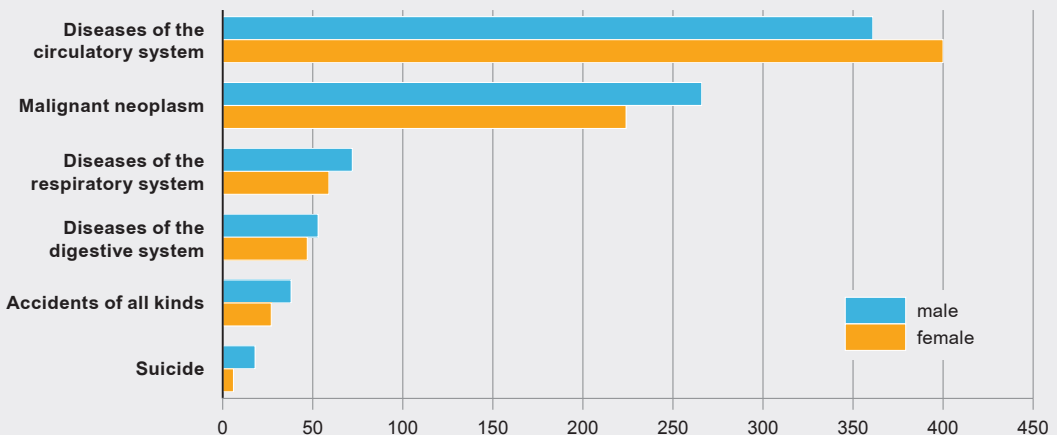
Territorial status: 31 December 2021



## Marriages and divorces since 1951 in thousands

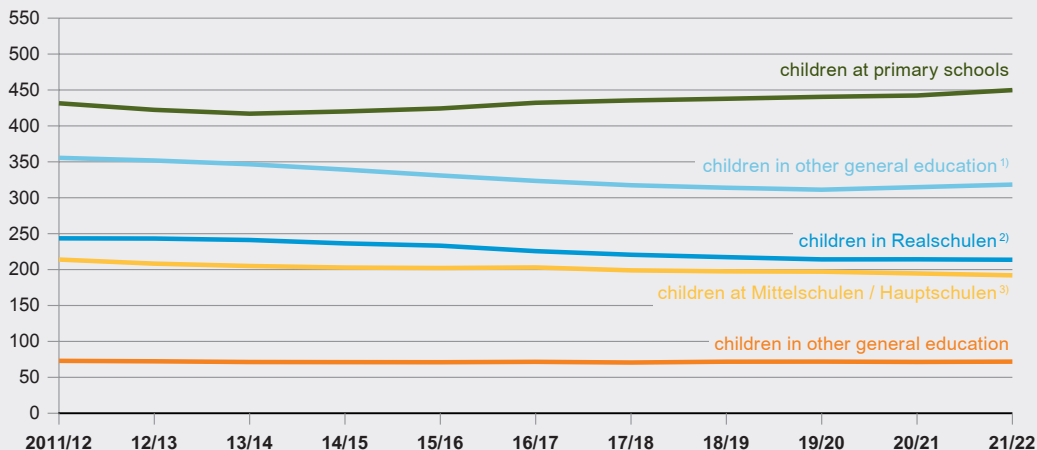


## Mortality 2020 by selected causes of death Deaths per 100,000 inhabitants of one sex



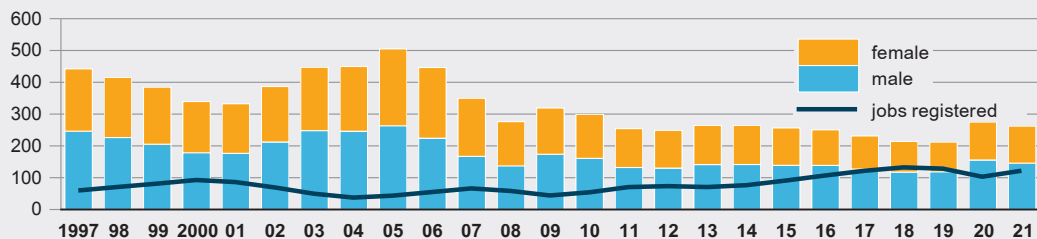
ser. no.	item	Unit	1980	1990	2000	2010	2020	2021
	<b>In addition: Education and culture</b>							
1	Realschulen on 1 October <sup>11)</sup>	schools .....	332	333	335	368	379	379
2		schoolchildren .....	178,770	121,531	166,902	242,516	214,286	213,682
3		teaching staff .....	8,388	8,900	10,194	14,271	15,605	15,707
4	Gymnasien on 1 October	schools .....	395	395	400	413	433	433
5		schoolchildren .....	329,554	272,240	322,056	387,761	314,712	318,302
6		teaching staff .....	18,173	20,573	21,779	26,367	25,382	25,617
7	Berufsschulen on 20 October <sup>12)</sup>	schools .....	273	258	235	228	228	229
8		schoolchildren .....	390,716	292,853	298,008	285,106	257,388	249,189
9		teaching staff .....	6,581	8,003	8,195	8,068	8,788	8,674
10	Total number of students in higher education <sup>13)</sup>	quantity	152,857	257,453	213,301	287,432	404,705	404,090
11	oh which universities .....	quantity	116,290	190,439	150,814	189,270	250,398	249,744
12	art colleges .....	quantity	2,162	2,492	3,046	3,299	3,675	3,596
13	universities of applied sciences (including universities of administrative science) .....	quantity	33,822	63,718	58,788	94,277	150,063	150,205
	<b>Administration of justice</b>							
14	Total number of final convictions .....	quantity	122,016	129,945	145,903	125,229	116,980	109,024
15	of which adults .....	quantity	91,783	109,455	120,749	102,980	103,383	97,080
16	young people aged 18–20 .....	quantity	18,283	14,090	15,529	12,831	8,694	7,629
17	young people aged 14–17 .....	quantity	11,950	6,400	9,625	9,418	4,903	4,315
18	of which convictions for road traffic offences .....	quantity	52,585	51,459	43,798	29,801	29,145	26,469
19	convictions excluding road traffic offences .....	quantity	69,431	78,486	102,105	95,428	87,835	82,555
	<b>Employment</b>							
20	Total of people in work <sup>2)</sup> .....	1,000	5,175	5,731	5,879	6,358	...	7,009
21	male .....	1,000	3,064	3,314	3,308	3,452	...	3,748
22	female .....	1,000	2,111	2,418	2,571	2,906	...	3,261
	of which aged							
23	under 25 years .....	%	21.7	17.9	12.7	11.8	...	10.3
24	25 to under 40 years .....	%	32.7	36.9	39.7	31.0	...	31.6
25	40 to under 65 years .....	%	43.1	43.5	46.2	55.0	...	54.9
26	65 years or over .....	%	2.5	1.7	1.4	2.2	...	3.2
	By professional status							
27	Self-employed .....	1,000	539	569	682	769	...	633
28	Employees .....	1,000	4,295	4,927	5,097	5,518	...	6,339
29	Activity rate <sup>14)</sup> .....	%	48.7	53.0	50.9	53.1	...	55.4
30	total .....	%	60.0	62.6	58.5	58.8	...	59.6
31	female .....	%	38.4	44.0	43.7	47.7	...	51.2
32	Foreign workers in employment <sup>15)</sup> .....	1,000	337	325	344	363	892	936
33	Unemployed people <sup>16)</sup> .....	quantity	147,714	240,745	339,537	299,448	275,075	262,186
34	Unemployment rate <sup>16) 17)</sup> .....	%	3.5	5.1	6.3	4.5	3.6	3.5
35	Total of jobs registered <sup>16)</sup> .....	quantity	61,218	71,131	89,588	50,333	100,066	119,158
36	People on a job retention scheme <sup>16)</sup> .....	quantity	23,384	9,870	7,146	89,750	545,717	318,660
37								
	<b>Agriculture and forestry</b>							
38	Agricultural holdings (2000: value of 1999) .....	quantity	243,372	198,765	149,057	97,735	84,217	83,380
	including an agricultural area used of							
39	2 to under 5 ha / from 2010 under 5 ha .....	quantity	49,374	35,409	23,112	4,035	2,553	2,660
40	5 to under 10 ha .....	quantity	62,282	44,801	29,684	17,435	15,789	15,500
41	10 to under 20 ha .....	quantity	77,607	58,909	38,317	27,334	22,120	21,920
42	20 to under 50 ha .....	quantity	50,481	53,255	44,918	30,968	24,224	23,730
43	50 to under 100 ha .....	quantity	3,053	5,629	11,050	13,906	13,977	13,960
44	100 ha or over .....	quantity	575	762	1,976	4,057	5,554	5,610
45	Agricultural area used total .....	1,000 ha	3,506	3,416	3,279	3,137	3,108	3,095
46	of which permanent pasture .....	1,000 ha	1,393	1,302	1,169	1,071	1,071	1,055
47	arable land .....	1,000 ha	2,083	2,089	2,092	2,052	2,023	2,025
48	including cornfields .....	1,000 ha	1,337	1,216	1,216	1,168	1,058	1,050
49	Crop harvest (with grain maize from 1990 with corn-cob-mix) .....	1,000 t	5,635	7,268	7,667	7,274	7,964	7,343
50	Potato harvest .....	1,000 t	2,518	1,953	2,417	1,648	1,911	1,668
51	Sugar beet harvest .....	1,000 t	4,003	4,814	5,183	4,253	5,308	5,646
52	Vegetable harvest .....	1,000 t	110	175	373	487	611	634

## Childcare and schoolchildren since 2011/12 in thousands



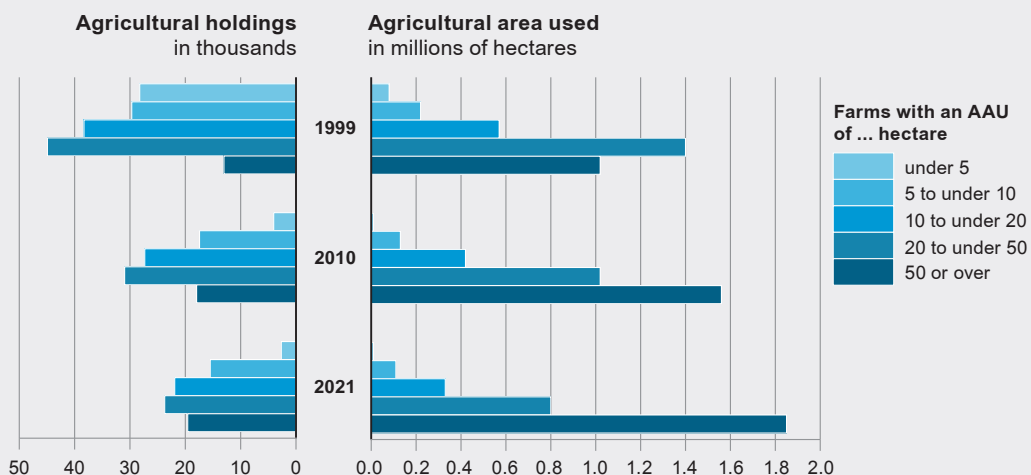
- 1) Grammar schools (year 5–13).
- 2) Secondary schools (years 5–10 excluding grammar schools).
- 3) Secondary schools (years 5–9 or 5–10 excluding grammar schools).

## Unemployed people and jobs registered since 1997\* in thousands



\* Annual averages.

## Structure of agricultural holdings 1999, 2010\* and 2021\* by size classes of agricultural area used (AAU)



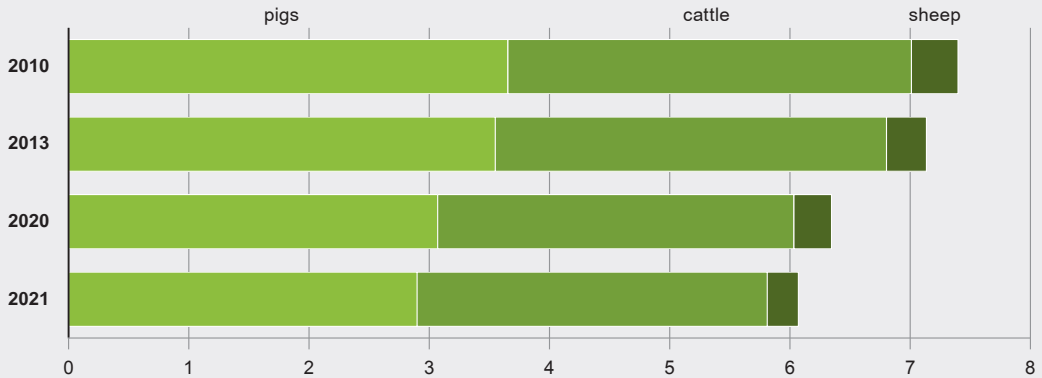
\* From 2010 agricultural holdings will only be registered from 5 ha AAU or from other minimum units defined in the Agricultural Statistics Act (e.g. from 0.30 ha of special crops).

ser. no.	item	Unit	1980	1990	2000	2010	2020	2021
<b>In addition: Agriculture and forestry</b>								
1	Fruit harvest in commercial fruit production (tree fruit only) ..	1,000 t	34	33	49	38	47	42
2	Grape must harvest .....	1,000 hl	120	493	480	354	268	446
3	Livestock (1980 to 1990: 3 December; 2000: 3 May; 2010, 2020: 1 March; 2019: 3 November)							
	of cattle .....	1,000	4,942	4,814	3,977	3,356	2,963	2,886
4	including dairy cows .....	1,000	1,986	1,809	1,416	1,244	1,118	1,086
5	pigs .....	1,000	4,146	3,716	3,731	3,654	3,070	2,742
6	sheep .....	1,000	292	387	479	388	313	259
7	Cow's milk production <sup>18)</sup> .....	1,000 t	8,493	8,142	7,650	7,759	8228 r	8,112
8	Total slaughter quantity <sup>19)</sup> .....	1,000 t	919	1,051	868	847	773	753
9	of which beef (excluding veal) .....	1,000 t	422	552	366	314	314	308
10	pork .....	1,000 t	478	486	493	528	455	441
11	Poultry meat <sup>20)</sup> .....	1,000 t	66	72	63	138	191	186
12	Production of table eggs <sup>21)</sup> .....	mill. pcs.	-	1,032	921	844	1,077	1,100
<b>Manufacturing Industry</b>								
<b>Manufacturing, mining and quarrying <sup>22)</sup></b>								
13	Companies .....	quantity	10,040	9,889	8,057	7,134	7,903	8,102
14	Total number of workers .....	quantity	1,385,601	1,443,363	1,207,466	1,138,089	1,299,507	1,296,896
15	Including intermediate goods producers .....	quantity	x	x	x	395,391	459,996	457,848
16	capital goods producers .....	quantity	x	x	x	517,761	603,109	602,015
17	durable goods producers .....	quantity	x	x	x	41,955	42,438	39,359
18	consumer goods producers .....	quantity	x	x	x	181,099	192,108	195,975
19	Gross fees .....	mill. €	21,554	35,175	43,038	48,083	68,713	69,801
20	Total turnover (excluding VAT) .....	mill. €	93,671	157,808	246,619	309,984	348,781	380,838
21	Including intermediate goods producers .....	mill. €	x	x	x	84,336	97,120	113,376
22	capital goods producers .....	mill. €	x	x	x	170,458	194,811	208,405
23	durable goods producers .....	mill. €	x	x	x	•	•	•
24	consumer goods producers .....	mill. €	x	x	x	36,130	42,383	43,804
25	including foreign sales .....	%	25.7	32.2	40.3	51.4	53.5	54.0
<b>Construction Industry (all companies)</b>								
26	Companies end of June .....	quantity	11,608	14,489	15,408	13,446	13,516	14,132
27	People working at the end of June .....	quantity	271,289	240,392	180,788	128,541	168,849	173,576
28	Hours worked in June .....	1,000	-	-	18,868	14,519	17,558	18,588
29	Pay in June .....	mill. €	-	-	395	306	512	541
30	Construction turnover in the previous year (excluding VAT) ..	mill. €	-	-	17,475	15,491	26,480	29,776
<b>Energy Industry</b>								
31	Total of final energy consumption <sup>23)</sup> .....	TJ	1,168,000	1,195,515	1,371,207	1,404,879	1,481,548	...
32	including consumption of coals .....	TJ	53,000	36,660	24,852	16,807	15,308	...
33	petroleum products .....	TJ	768,000	699,621	732,527	618,889	645,068	...
34	gases .....	TJ	153,000	210,084	279,478	300,011	288,760	...
35	electricity .....	TJ	165,000	214,095	260,382	296,338	277,413	...
36	other energy sources .....	TJ	29,000	35,055	73,966	172,833	254,999	...
<b>Construction and housing</b>								
37	Residential buildings completed (new constructions) <sup>24)</sup> .....	quantity	43,470	30,077	38,190	17,392	25,449	22,808
38	of which buildings with 1 flat .....	quantity	32,037	22,863	29,792	14,518	19,701	17,273
39	2 flats .....	quantity	9,379	4,588	5,177	1,520	2,395	2,421
40	3 flats or more <sup>24)</sup> .....	quantity	2,054	2,626	3,211	1,354	3,353	3,114
41	Total of completed flats .....	quantity	75,925	61,879	74,366	33,137	64,013	60,857
42	of which flats with 1 or 2 rooms .....	quantity	6,129	6,169	6,035	3,979	16,743	17,676
43	3 or 4 rooms .....	quantity	19,826	22,545	24,062	9,987	23,691	22,465
44	5 rooms or more .....	quantity	49,970	33,165	44,269	19,171	23,579	20,716
45	Total of residential buildings on 31 December <sup>25)</sup> .....	quantity	2,095,681	2,338,156	2,687,868	2,934,602	3,112,961	3,135,436
46	Total of flats on 31 December <sup>26)</sup> .....	quantity	4,411,616	4,752,471	5,577,859	6,027,400	6,549,811	6,608,449
47	of which flats with 1 or 2 rooms .....	quantity	550,849	439,872	527,518	562,588	911,351	928,483
48	3 or 4 rooms .....	quantity	2,149,326	2,144,392	2,484,597	2,616,670	2,694,417	2,715,931
49	5 rooms or more .....	quantity	1,711,441	2,168,207	2,565,744	2,848,142	2,944,043	2,964,035



### Livestock\* 2010, 2013, 2020 and 2021

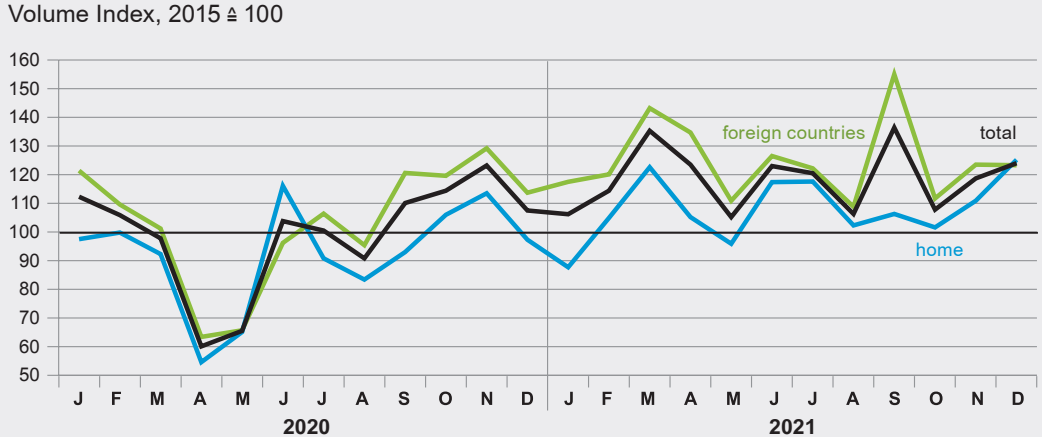
in millions of animals



\* from 2010 on 1 March.

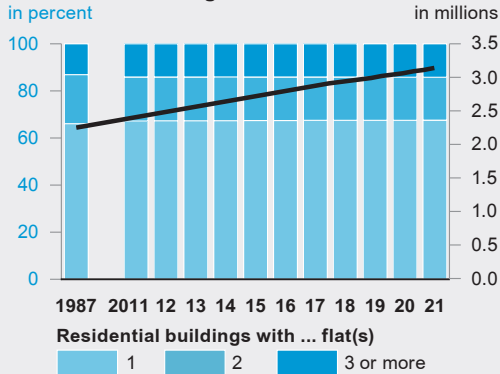
### New orders for manufacturing in 2020 and 2021

Volume Index, 2015 = 100

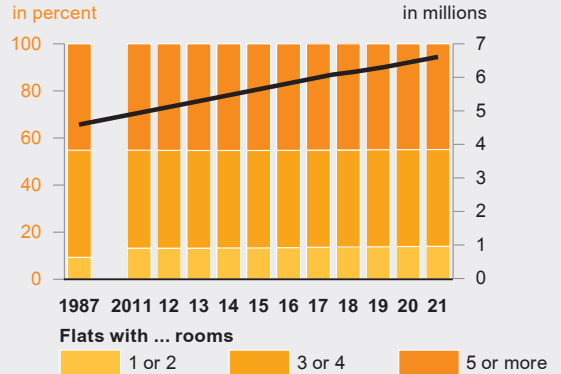


### Total\* of residential buildings and dwellings since 1987 and since 2011

#### Residential buildings



#### Flats



\* Results of the census of buildings and housings of 25 May 1987. From 2011 updating of the inventory on the basis of the final results of the 2011 census of buildings and housing.

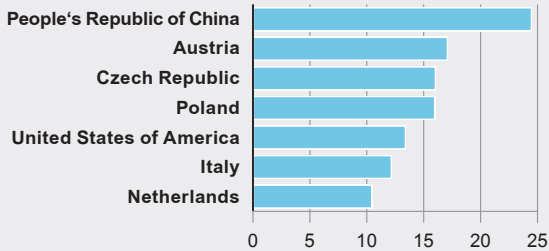
ser. no.	item	Unit	1980	1990	2000	2010	2020	2021
<b>Trade and hospitality</b>								
<b>Foreign trade (preliminary results for 2020)</b>								
1	Total exports <sup>27)</sup> .....	mill. €	24,122	51,330	92,878	144,011	168,192	189,859
2	of which goods of the food industry .....	mill. €	2,151	3,461	4,712	7,044	9,444	10,064
3	goods of the business economy .....	mill. €	21,971	47,869	88,166	135,008	156,831	176,238
4	of which raw materials .....	mill. €	347	455	714	904	810	969
5	semi-finished goods .....	mill. €	1,509	2,177	3,245	6,307	6,665	10,043
6	finished goods .....	mill. €	20,115	45,238	84,207	127,798	149,356	165,225
7	of which primary products .....	mill. €	2,594	5,157	8,465	11,361	11,989	14,922
8	finished products .....	mill. €	17,520	40,081	75,742	116,437	137,366	150,304
9	of which Europe .....	mill. €	18,279	38,175	64,010	94,268	109,646	124,569
10	including EU countries <sup>28)</sup> .....	mill. €	15,074	31,954	48,709	81,603	85,781	100,257
11	Africa .....	mill. €	1,181	1,270	1,531	2,817	2,308	2,416
12	America .....	mill. €	2,435	6,019	15,517	18,474	22,235	25,973
13	Asia .....	mill. €	2,046	5,402	11,070	26,988	32,566	35,158
14	Australia and Oceania .....	mill. €	181	461	718	1,437	1,426	1,729
15	miscellaneous <sup>29)</sup> .....	mill. €	-	-	-	27	11	14
16	Total imports <sup>27)</sup> .....	mill. €	24,017	42,669	85,034	129,429	180,684	211,850
17	of which goods of the food industry .....	mill. €	1,888	3,002	4,366	7,096	10,580	11,337
18	goods of the business economy .....	mill. €	22,129	39,668	80,668	117,070	162,903	188,744
19	of which raw materials .....	mill. €	5,503	3,024	5,056	14,677	8,457	13,751
20	semi-finished goods .....	mill. €	2,805	3,896	5,397	5,474	6,140	8,708
21	finished goods .....	mill. €	13,822	32,748	70,216	96,919	148,306	166,285
22	of which primary products .....	mill. €	2,942	5,458	7,347	10,450	10,920	13,715
23	finished products .....	mill. €	10,879	27,290	62,868	86,469	137,386	152,570
24	of which Europe .....	mill. €	15,533	30,322	55,229	86,021	125,147	144,204
25	including EU countries <sup>28)</sup> .....	mill. €	11,721	23,581	36,765	72,393	105,220	120,294
26	Africa .....	mill. €	3,144	2,024	3,341	3,886	3,619	4,665
27	America .....	mill. €	1,867	4,007	9,695	10,540	14,101	14,266
28	Asia .....	mill. €	3,452	6,259	16,642	28,764	37,553	48,344
29	Australia and Oceania .....	mill. €	22	57	118	219	166	210
30	miscellaneous <sup>29)</sup> .....	mill. €	-	-	-	0	98	160
<b>Tourism <sup>30)</sup></b>								
31	Beds available in tourist accomodation .....	quantity	391,127	493,289	557,465	559,833	530,333	552,776
32	Guest arrivals .....	1,000	12,586	21,150	23,827	28,289	19,832	19,551
33	of which foreign guests .....	1,000	2,399	4,933	4,844	6,496	2,886	2,647
34	Overnight stays .....	1,000	55,990	78,471	78,178	77,877	59,962	60,970
35	of which foreign guests .....	1,000	4,814	10,225	10,167	13,472	7,051	6,845
<b>Traffic</b>								
<b>Road Traffic</b>								
36	Number of motor vehicles on 1 January <sup>31)</sup> .....	1,000	5,031	6,928	8,516	8,630	10,463	10,581
37	including passenger cars and estate cars <sup>32)</sup> .....	1,000	4,076	5,667	6,774	6,863	8,170	8,229
38	per 1,000 inhabitants .....	quantity	373	500	556	549	622	624
39	total motorbikes <sup>33)</sup> .....	1,000	159	319	651	754	992	1,017
40	Registration of new motor vehicles .....	quantity	506,943	647,714	636,171	633,191	707,544	658,182
41	including passenger cars and estate cars <sup>32)</sup> .....	quantity	434,467	574,940	531,331	544,668	579,065	531,550
42	Total of road accidents .....	quantity	302,806	334,341	336,139	356,866	345,411	359,002
43	of which material damage only .....	quantity	231,713	269,820	273,023	305,897	299,394	313,853
44	personal injury .....	quantity	71,093	64,521	63,116	50,969	46,017	45,149
45	of which fatalities .....	quantity	3,002	1,913	1,450	697	484	443
46	injured people .....	quantity	97,728	88,691	87,004	67,667	57,179	56,683
<b>Air transport</b>								
47	Passengers (arrival and departure) .....	1,000	6,502	12,598	25,922	39,479	12,678	14,497
48	Volume of freight (from 2010 including mail) .....	t	35,696	67,153	143,801	294,525	155,148	179,161
<b>Rail transport</b>								
49	Goods received .....	1,000 t	38,259	31,973	26,524	27,819	27,261	31,541
50	Goods dispatched .....	1,000 t	26,482	22,647	19,699	24,555	23,685	26,876
<b>Inland waterway transport</b>								
51	Goods received .....	1,000 t	9,179	8,195	7,812	5,376	4,225	3,482
52	Goods dispatched .....	1,000 t	7,336	5,336	5,019	3,603	3,479	3,140

## Imports and exports\* 2021 by major countries

in billions of euros

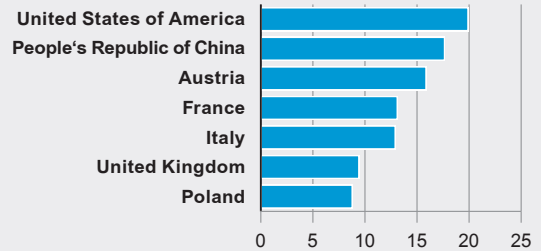
### Import by country of origin

Share in total imports: 51.8%



### Export by countries of destination

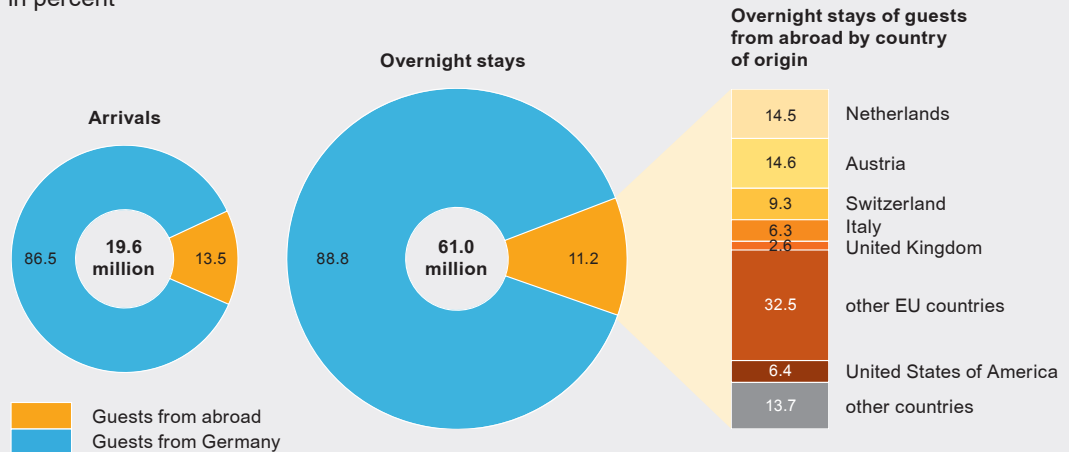
Share in total exports: 51.5%



\* Preliminary results.

## Guests arrivals and overnight stays in tourist accommodation and campsites\* 2021 by country of origin of guests

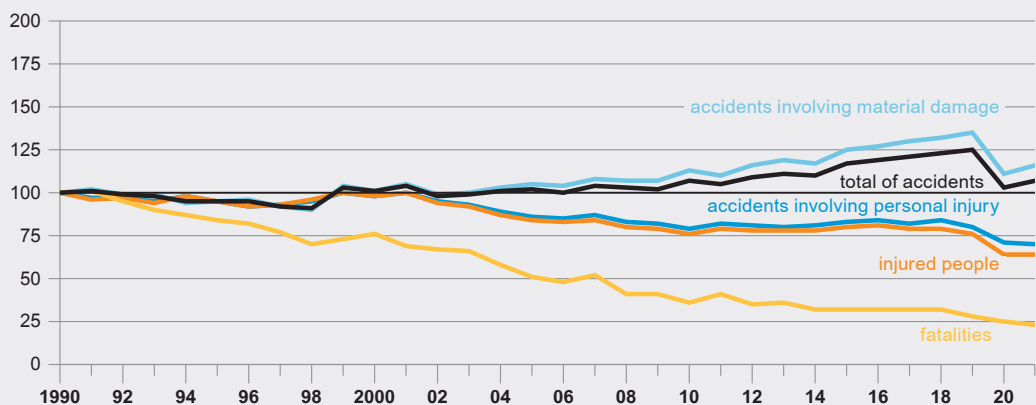
in percent



\* Tourist accommodation of ten or more beds (including campsites of ten or more pitches).

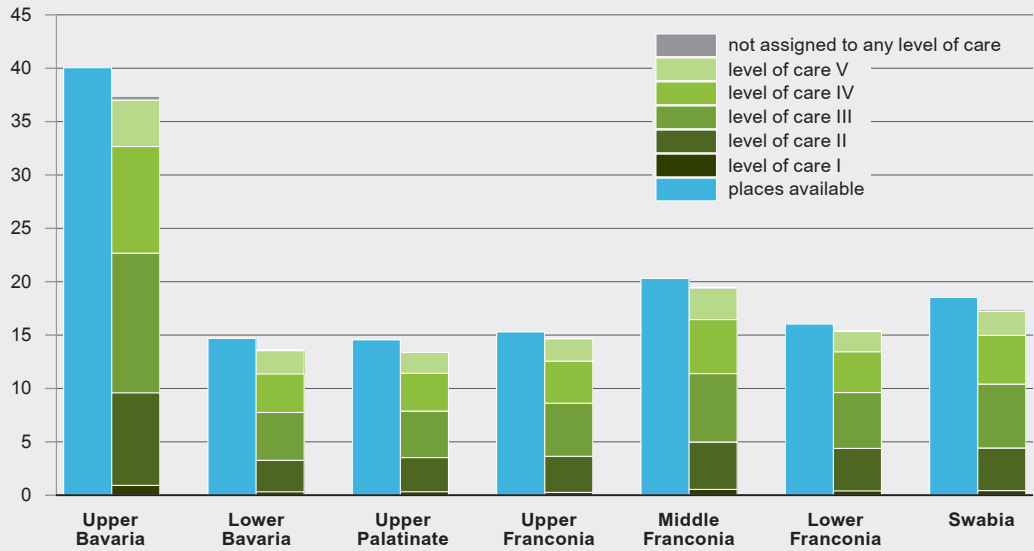
## Number of road accidents since 1990

1990 = 100

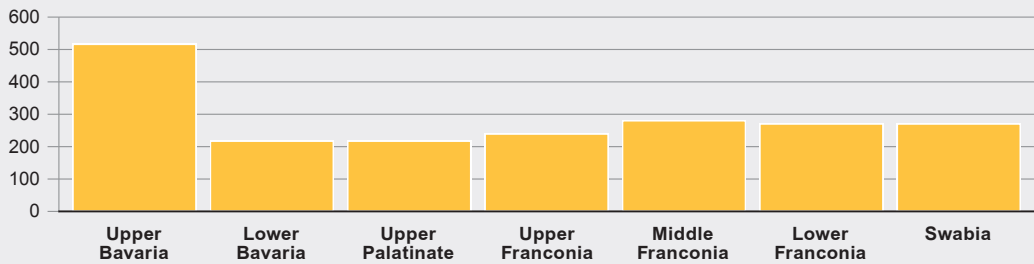


ser. no.	item	Unit	1980	1990	2000	2010	2020	2021
<b>Money and lending</b>								
1	Savings at financial institutions on 31 December <sup>34)</sup> .....	mill. €	46,438	68,762	104,112	122,601	108,734	107,843
2	at building societies on 31 December .....	mill. €	10,822	13,831	19,230	27,420	15,112	13,958
3	Loans to non-bank financial institutions on 31 December <sup>34)</sup> .....	mill. €	133,888	263,237	518,913	524,552	613,728	643,837
<b>Business registrations <sup>35)</sup></b>								
4	Registrations .....	quantity	38,662	102,935	124,351	150,264	118,517	123,787
5	including newly founded companies <sup>36)</sup> .....	quantity	•	78,318	94,523	122,834	94,368	99,358
6	De-registrations .....	quantity	27,115	68,623	104,628	117,107	94,351	91,745
7	including complete liquidation .....	quantity	•	42,530	68,755	87,335	71,802	68,343
8	<b>Total of business insolvencies</b> .....	quantity	1,033	1,432	3,073	3,837	2,172	1,840
<b>Social services</b>								
<b>Public health insurance</b>								
9	Total of members as an annual average; from 2006: 1 July							
	Total .....	1,000	6,178	6,728	7,261	7,603	8,730	8,758
10	including compulsory members .....	1,000	3,739	4,100	4,212	4,520	5,289	5,323
11	voluntary members .....	1,000	722	748	1,021	762	1,082	1,066
<b>Pension insurance fund <sup>37)</sup></b>								
12	Total of pensions <sup>38)</sup> .....	1,000	1,488	1,591	1,851	3,287	3,448	3,462
13	of which old-age pensions (up to 1990 „Altersruhegelder“) ..	1,000	750	880	1,203	2,352	2,511	2,528
14	Average pension payment per month at							
	standard retirement age male .....	€	•	581	721	1,007	1,265	1,269
15	female .....	€	•	213	306	515	766	773
<b>Unemployment insurance scheme and benefits <sup>39)</sup></b>								
16	Recipients <sup>40)</sup> of Arbeitslosengeld (annual average) .....	quantity	88,201	132,812	187,216	152,624	160,795	140,497
17	Arbeitslosengeld II in December .....	quantity	14,721	33,549	79,700	463,471	418,355	389,178
18	Expenditure on Arbeitslosengeld .....	1,000 €	797,311	1,498,352	2,793,202	2,383,225	3,329,543	3,129,437
19	Arbeitslosenhilfe/-geld <sup>41)</sup> .....	1,000 €	20,036	294,563	718,059	1,174,172	1,339,345	1,438,538
<b>Social welfare</b>								
Beneficiaries of								
supplementary welfare allowance not living in institutions								
20	on 31 December <sup>42)</sup> total .....	quantity	•	•	210,570	9,271	12,375	...
21	per 1,000 inhabitants .....	quantity	•	•	17.0	0.7	0.9	...
22	Total gross expenditure <sup>43)</sup> .....	mill. €	763	1,754	2,705	3,481	1,293	...
23	including supplementary welfare allowance .....	mill. €	216	555	818	138	167	...
24	Total of expenditure per inhabitant only <sup>43)</sup> .....	€	54	121	188	241	73	...
<b>Total of housing benefits <sup>44)</sup></b>								
25	Total of beneficiaries on 31 December <sup>45)</sup> .....	quantity	182,187	199,963	97,601	82,274	55,085	...
26	of which recipients of rent subsidy .....	quantity	171,284	181,722	91,223	76,444	52,580	...
<b>Day childcare on 1 March</b>								
27	(1980 – 2000 early years) places .....	quantity	213,952	252,139	368,504	501,565	663,264	687,043
28	childcare (Kindergarten) only children in care .....	quantity	236,856	292,141	368,422	461,177	599,803	609,872
<b>Child and youth welfare</b>								
29	Expenses from public funds <sup>46)</sup> .....	1,000 €	185,875	281,211	1,458,541	3,833,885	8,755,188	...
<b>Public finances</b>								
30	Total of government expenditure <sup>47)</sup> .....	mill. €	24,509	36,075	49,202	70,818	107,165	113,965
31	of which state of Bavaria expenditure .....	mill. €	16,342	23,048	32,410	45,348	72,516	74,948
32	of local councils/ALC .....	mill. €	11,639	17,668	23,015	34,256	53,363	5,768
33	Total of tax revenue of public budgets .....	mill. €	28,344	43,341	72,294	•	•	•
34	of which federal revenue .....	mill. €	12,907	19,206	36,339	•	•	•
35	of the state of Bavaria .....	mill. €	10,866	17,507	26,628	31,091	44,150	49,861
36	of local councils/ALC .....	mill. €	4,571	6,628	9,327	12,196	19,422	19,976
37	Total public debt <sup>48)</sup> .....	mill. €	17,581	29,922	39,211	49,644	35,702	38,009
38	of which state of Bavaria expenditure .....	mill. €	8,431	17,042	20,303	30,588	18,510	20,545
39	of local councils/ALC .....	mill. €	8,073	11,241	17,241	18,275	16,047	16,244
40	Full-time federal <sup>50)</sup> staff <sup>49)</sup> .....	quantity	204,297	187,495	58,803	44,178	35,275	36,020
41	state of Bavaria expenditure .....	quantity	247,606	241,318	225,022	194,055	206,230	208,560
42	local councils/ALC .....	quantity	174,500	201,297	170,465	118,597	137,210	139,615
<b>Wages and salaries (earnings)</b>								
<b>Manufacturing industry, service sector</b>								
Average gross hourly earnings <sup>51)</sup>								
43	of full-time employees in total .....	€	•	•	•	19.83	25.32	25.80
44	male .....	€	•	•	•	21.03	26.54	26.95
45	female .....	€	•	•	•	16.73	22.31	22.93

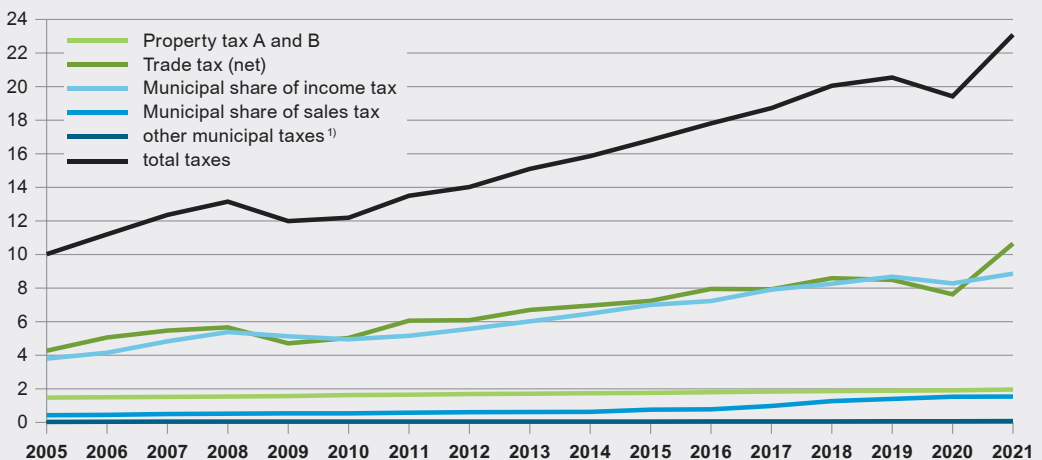
**Places available and people in need of care in nursing homes on 15 December 2019 by administrative districts and levels of care in thousands**



**Number of nursing homes**



**Tax revenue of local councils/ALC 2005 to 2021 in billions of euros**

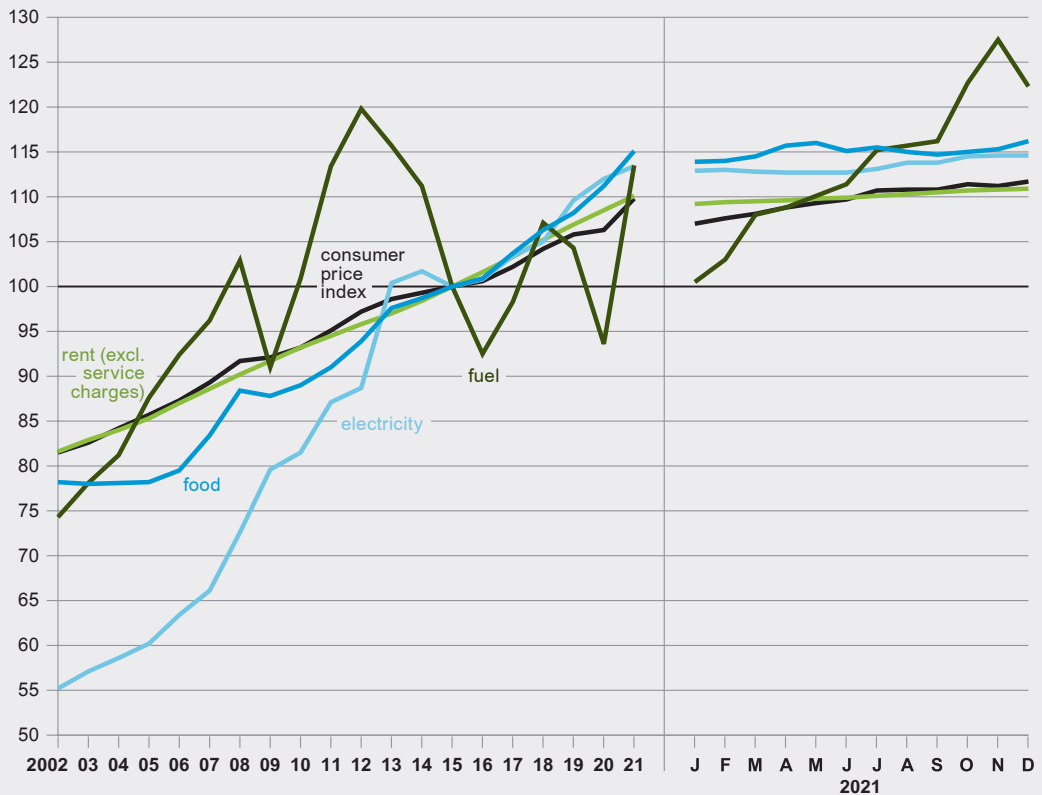


\* According to the quarterly cash statistics  
 1) Dog tax, tax on second homes, other local taxes.

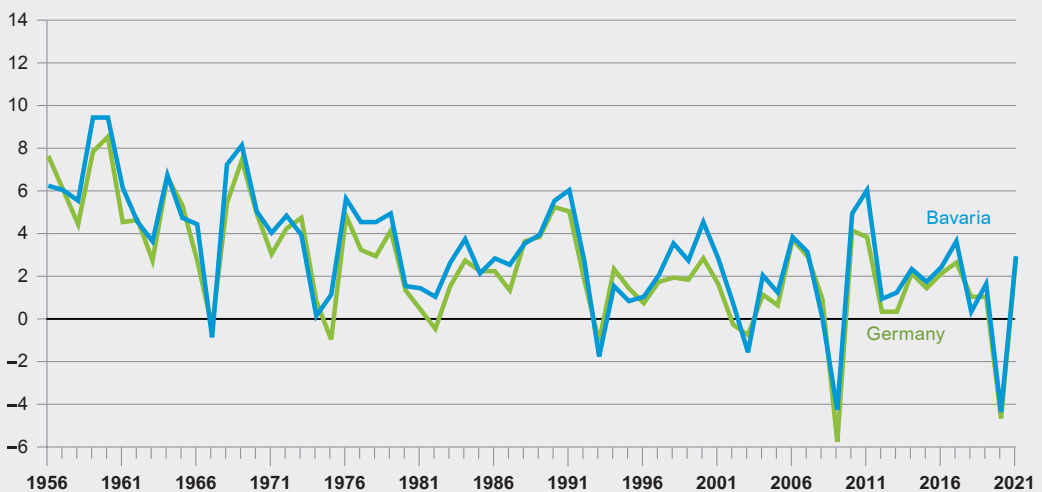
ser. no.	item	Unit	1980	1990	2000	2010	2020	2021
	In addition: Wages and salaries (earnings)							
	<b>Manufacturing industry, service sector</b>							
1	Average gross monthly earnings <sup>51)</sup> of full-time employees in total .....	€	•	•	•	3 340	4 162	4 303
2	male .....	€	•	•	•	3 547	4 369	4 508
3	female .....	€	•	•	•	2 809	3 652	3 798
	<b>Prices</b>							
4	Consumer price index for Bavaria (2015 ± 100) .....	%	48.8	63.3	78.6	93.2	106.3	109.8
5	of which food and non-alcoholic beverages .....	%	•	•	74.6	89.4	110.5	114.3
6	rent (excl. service charges) .....	%	39.7	57.0	80.4	93.8	108.4	110.3
7	domestic fuel oil .....	%	57.5	44.8	68.5	111.1	86.2	119.9
8	fuel .....	%	•	•	71.9	100.9	93.6	113.5
9	Price index for buildings (2015 ± 100)							
	residential buildings .....	%	45.8	63.7	77.3	89.5	117.0	126.8
10	office buildings .....	%	42.6	61.8	76.0	89.7	116.7	126.8
11	Total purchase values for building land per m <sup>2</sup> .....	€	28.73	62.31	100.44	128.49	249.22	...
12	of which land ready for development .....	€	40.22	78.44	138.56	223.39	348.76	...
	<b>National accounts</b> <sup>52) 53)</sup>							
13	Gross domestic product at market prices .....	mill. €	...	...	...	...	...	...
14	Gross value added at basic prices .....	mill. €	...	263 313	357 900	452 128	624 403	661 541
	of which <sup>54)</sup>		...	239 415	322 726	406 514	565 582	598 238
15	agriculture, forestry, fisheries .....	%	...	...	...	...	...	...
16	manufacturing industry .....	%	...	1.5	1.3	0.9	0.8	0.9
17	service sectors .....	%	...	37.0	31.7	32.6	32.7	32.9
18	trade, transport, hospitality; information and communication .....	%	...	61.4	67.0	66.5	66.5	66.2
19	financial, insurance and business services; real estate .....	%	...	19.7	20.1	19.1	20.0	20.5
20	public and other service providers, education and health .....	%	...	23.7	27.9	28.1	27.2	26.8
			...	18.0	19.0	19.3	19.2	19.0

<sup>1)</sup> From 2018 including people in civil partnership. – <sup>2)</sup> Results of the microcensus. Data for reporting year 2020 cannot be shown for pandemic-related quality reasons. – <sup>3)</sup> From 2018 including same sex marriages. – <sup>4)</sup> From 2019 including same sex divorces. – <sup>5)</sup> From 2000 figures of the Bayerische Landesärztekammer (Bavarian State Medical Association). – <sup>6)</sup> From 2000 figures of the Bayerische Landes Zahnärztekammer (Bavarian State Dental Association); these membership statistics have been revised and may therefore differ from previous publications. – <sup>7)</sup> From 1990 onwards not comparable with previous years due to the change in definition of hospitals. – <sup>8)</sup> 1980 on 31 December, from 1990 annual average in each case. – <sup>9)</sup> From 2018 including dentists. – <sup>10)</sup> Due to the revision of the classification of causes of death the definition of these items has changed several times. – <sup>11)</sup> Secondary schools including years 5–10 (excluding Gymnasien). Including Realschulen for special educational needs. – <sup>12)</sup> Vocational schools. Up to and including 2002 data as of 15 October; including Berufsschulen for special educational needs. – <sup>13)</sup> In the winter semester; including double enrolment. – <sup>14)</sup> Proportion of all economically active people within the total population. – <sup>15)</sup> Employees subject to social insurance contributions on 30 June. – <sup>16)</sup> Annual average in each case. – <sup>17)</sup> Unemployed as a percentage of the employed civilian labour force or, from 2003, as a percentage of all civilian labour force. – <sup>18)</sup> From 2010 figures of the Federal Agency of Agriculture and Food. 2010 cow, goat, sheep and buffalo milk. 2020 preliminary results. – <sup>19)</sup> Meat production from commercial slaughtering (excluding poultry meat) of animals of domestic and foreign origin. – <sup>20)</sup> From 2010 figures of the Federal Statistical Office; all poultry slaughterhouses with approval in accordance with EC hygiene legislation. Until 2009 poultry slaughterhouses with a capacity of 2,000 animals minimum per month. – <sup>21)</sup> In companies with 3,000 places for hens minimum excluding poultry breeding and reproduction. – <sup>22)</sup> Mining and manufacturing (including craft industries) of enterprises with 20 or more workers. For companies, workers monthly average. From 2007 as of September. From 2009 according to Classification of Economic Activities 2008. – <sup>23)</sup> For 2020 values from 2019 are presented for the items under the serial numbers 31 to 36. – <sup>24)</sup> From 1990 including dormitories. – <sup>25)</sup> 2020 and 2021 including dormitories. – <sup>26)</sup> 2020 and 2021 including flats in dormitories. – <sup>27)</sup> Including returned goods, replacement deliveries etc. – <sup>28)</sup> Total number of EU member states at the time indicated: 1980: 9, 1990: 12, 2000: 15, 2010: 27, 2020 and 2021: 27. – <sup>29)</sup> Ship and aircraft requirements, countries not identified, etc. – <sup>30)</sup> In 1980 results from reporting municipalities with at least 5,000 overnight stays. Subsequently results for tourist accommodation of 9 or more beds and for campsite of three or more pitches; from 2012 10 or more beds or pitches; 1990 and 2000 campsites revised. Beds available as of 30 June (beds excluding campsites). – <sup>31)</sup> Status as of 1 January of the following year. From 2008 registered vehicles only; excluding temporary de-registrations. – <sup>32)</sup> From 1996 passenger cars and other „M1 vehicles“. – <sup>33)</sup> Including light motorbikes. – <sup>34)</sup> All branches of Deutsche Bundesbank operating in Bavaria, excluding Postbank and Deutsche Bundesbank. From 1999 excluding trust loans and loans to building societies but including loans of building societies and non-bank financial institutions. – <sup>35)</sup> Excluding vending machine operators and travel industry. – <sup>36)</sup> Up to and including 2002 new company formations including mergers or divisions. – <sup>37)</sup> Results from 2003 are based on amendments to the Pension Reform Act, which entered into force on 1 January 1992. – <sup>38)</sup> 1980 and 1990 at the beginning of the respective year, for all other years at the end of the respective year. – <sup>39)</sup> From 2019 data after revision. – <sup>40)</sup> From 2019 „Leistungsbeziehende“. – <sup>41)</sup> Unemployment assistance/benefits. Unemployment assistance was replaced by basic security benefits for job seekers in 2005. Only figures recorded by the Federal Agency are shown. – <sup>42)</sup> Reference date for figures from reformed social assistance statistics (since 1994); due to legal changes as of January 2005 a comparison with previous years is only possible to a limited extent. – <sup>43)</sup> Excluding benefits for asylum seekers and tolerated persons. From 2017 without data according to Chapter 4 SGB XII (basic income support in old age and in case of reduced earning capacity), from 2020 without integration assistance under SGB IX. – <sup>44)</sup> From 2005 only households receiving housing benefits are shown. – <sup>45)</sup> From 1990 including payments in arrears. – <sup>46)</sup> Results from 1991 onwards only partly comparable due to the change in the legal basis (Kinder- und Jugendhilfegesetz from 26 June 1990). – <sup>47)</sup> Excluding associations performing communal task. – <sup>48)</sup> Including associations performing communal tasks; from 2000 excluding legally independent hospitals. – <sup>49)</sup> From 2018: figures rounded to 5. – <sup>50)</sup> Up to and including 1990 staff at Bundesbahn and Bundespost (former state-owned railway and postal service) included; incl. Bundesseisenbahnvermögen (provides HR, administrative and social services for the state-owned railway) and the Federal Employment Agency; excluding soldiers; from 2018: including public bodies and institutions (excluding the Federal Employment Agency and social security institutions). – <sup>51)</sup> Excluding bonuses. – <sup>52)</sup> All figures in current prices. – <sup>53)</sup> Due to the revision 2011 no comparable data is available for the years 1980 to 1990. Therefore, results for 1991 are presented in the column for 1990. – <sup>54)</sup> Share of total gross value added at basic prices in percent.

**Consumer price index since 2002**  
**Development by selected product groups**  
 2015 = 100



**Growth rates of real gross domestic product in Bavaria and Germany since 1956\***  
 in percent



\* The results from 1956 to 1970, 1971 to 1991 and 1992 to 2021 are not fully comparable due to differences in conception and definition. 1956 to 1970 in 1991 prices, since 1971 in prices of the previous year as a chain index.

**Federal Republic of Germany including federal states and seats of government**

