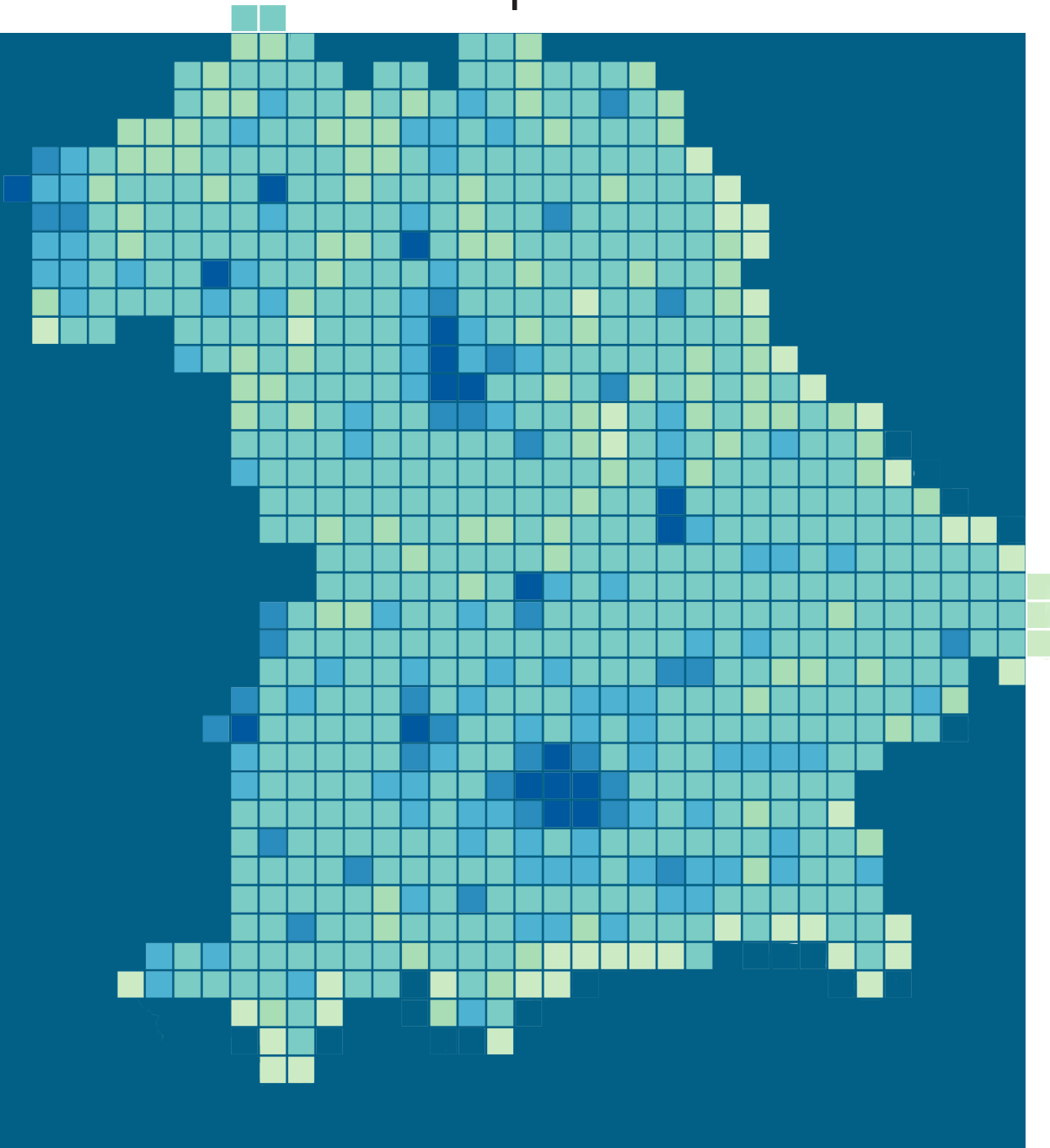




Bavaria compact 2024



IMPRINT

Bavaria compact 2024
Order-Nr. Z22021 202400
Publication frequency: annually

Office in charge of publishing, printing
Bayerisches Landesamt für Statistik
Nürnberger Straße 95 | 90762 Fürth
www.statistik.bayern.de

Picture credits
© Bayerisches Landesamt für Statistik

Paper
Printed on environmental friendly paper
bleached without chlorine

Distribution
E-mail info@statistik.bayern.de
Phone +49 911 98208-6311

Information service
E-mail info@statistik.bayern.de
Phone +49 911 98208-6563

Please note

This publication is part of the public relations activities of the Bavarian Government. It may not be used by political parties, electoral canvassers or counting assistants for the purpose of election campaigning during the period of five months prior to an election. This applies to state, national, local and European elections. During this time its distribution at electoral events, at party information stands and inserting, printing and affixing party political information or advertising material is strictly prohibited. It is also illegal to pass on such information to third parties for the purpose of electoral canvassing. Even if there is no forthcoming election, the publication may not be used in ways that could be interpreted as the state government favouring individual political groups. Parties are allowed to use the publication to inform their own members.

© Bayerisches Landesamt für Statistik,
Fürth 2024

Reproduction and distribution, also partially,
is permitted provided the source is named.



All publications are available
on the Internet at
www.statistik.bayern.de/produkte



Table of contents

Area and Population 4
Area | Population

Population dynamics 5
Marriages | Natural population change | Immigration | Naturalisations

Public healthcare 6
Physicians | Pharmacies | Hospitals | Causes of death

Employment 7
Employment | Unemployment

Education and Culture 8
Schools | Higher education

Justice and Public security 9
Final convictions | Criminal offences

Elections 10
Elections for the Landtag (Bavarian State Parliament) |
Elections for the German Bundestag (Federal Parliament) | European elections |
District elections | Municipal elections | Petitions for a referendum | Referendum

Agriculture and Forestry 12
Agriculture holdings | Land use | Harvesting | Livestock farming

Legal units and local units 13
Business notifications | Insolvencies

Manufacturing industry 14
Manufacturing, mining and quarrying | Construction industry | Energy consumption

Construction and Housing	15
Building permits Works completions Building stock	
Trade, Accomodation and Food services	16
Foreign trade Tourism	
Transport.....	17
Road Traffic Passenger transport Air transport Inland waterway transport	
Social care, Child and youth welfare.....	18
Health insurance Pension insurance Unemployment insurance scheme	
Social welfare Housing benefits Day childcare Child and youth welfare	
Public finances	19
Federal, state and municipal finances Taxes and debt	
Prices.....	20
Consumer price index Construction and Residential property prices	
Wages and Salaries (earnings).....	21
Earnings	
Equipment and Consumption	22
Sample survey of income and expenditure (EVS)	
and Continuous household budget surveys (LWR)	
National accounts	23
Gross domestic product Gross value added	
Environment.....	24
Greenhouse gases Waste Water Environmental economics	

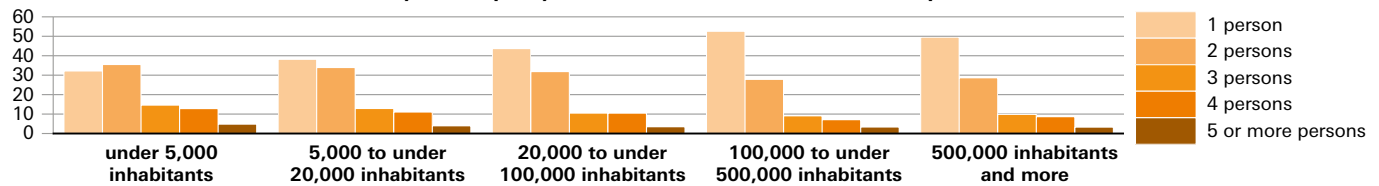
Area and Population

Area | Population

Description	Unit	1980	1990	2000	2010	2020	2023
Area on 31 December ¹	km ²	70,551	70,554	70,548	70,550	70,542	70,542
Population on 31 December ²	number	10,928,151	11,448,823	12,230,255	12,538,696	13,140,183	13,435,062
of which male	number	5,228,969	5,555,722	5,974,283	6,158,439	6,512,595	6,664,456
married ³	number	5,249,789	5,550,259	5,474,486	5,183,925	5,722,509	5,644,106
of which aged under 6 years	%	5.9	6.7	6.2	5.1	5.9	5.8
6 to under 15 years	%	12.1	9.2	10.1	8.7	8.0	8.4
15 to under 18 years	%	5.2	3.0	3.2	3.2	2.7	2.7
18 to under 25 years	%	11.2	10.8	7.8	8.4	7.7	7.4
25 to under 30 years	%	7.0	9.0	6.2	6.1	6.4	6.4
30 to under 40 years	%	13.6	14.9	17.3	12.4	13.4	13.6
40 to under 50 years	%	14.1	13.0	14.4	17.0	12.5	12.5
50 to under 65 years	%	15.7	18.4	18.6	19.5	22.8	22.1
65 years or older	%	15.2	15.0	16.2	19.5	20.7	21.2
including foreigners	1,000	711	856	1,132	1,191	1,805	2,156
Population per square kilometre (km ²)	number	155	162	173	178	186	190
Private households ⁴	1,000	4,286	4,916	5,521	6,065	...	6,516
of which one-person households	1,000	1,237	1,673	1,946	2,412	...	2,669
multi-person households	1,000	3,048	3,243	3,575	3,653	...	3,847
of which 2 persons	1,000	1,204	1,434	1,759	1,956	...	2,119
3 or more persons	1,000	1,845	1,809	1,816	1,697	...	1,728
Average household size	people	2.6	2.3	2.2	2.1	...	2.1

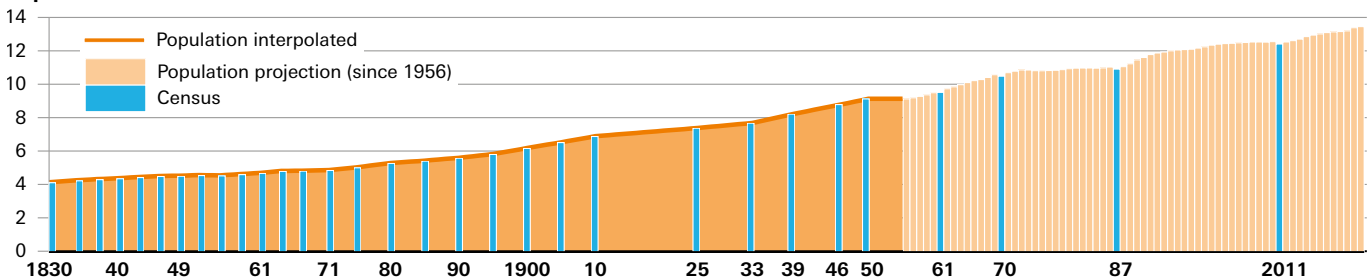
¹ 2023 column: data of 2022. – ² Current population based on the previous census. From May 2022 onwards, population numbers will be revised on the basis of the 2022 census. The population figures shown for reference day 31 December 2023 are not revised yet and therefore still based on the results of the 2011 census. – ³ From 2018 onwards including persons in civil partnerships. – ⁴ Results of the microcensus. Data for reference year 2020 is not included for pandemic-related quality reasons. From 2020 onwards in main residence households and presentation of initial results.

Private households in Bavaria 2023 by municipality size classes and household size in percent



* Results of the microcensus: population of main residence households. Persons withholding this information were added to total.

Population in Bavaria since 1830 in millions



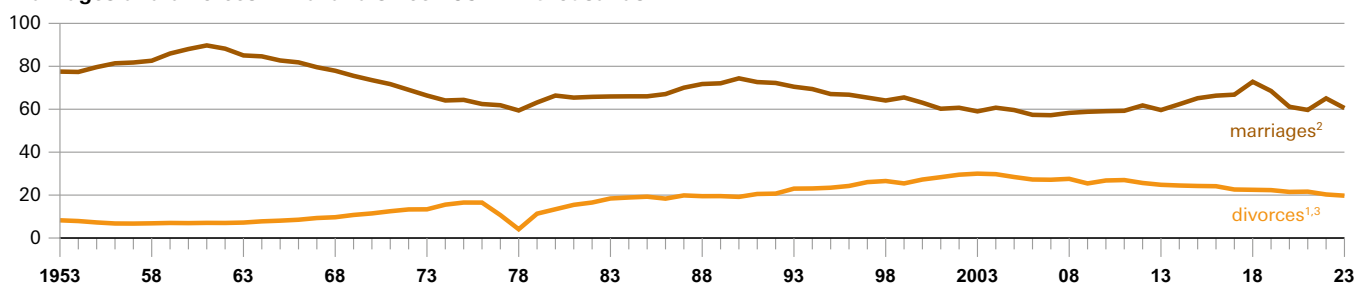
Population dynamics

Marriages | Natural population change | Immigration | Naturalisations

Description	Unit	1980	1990	2000	2010	2020	2023
Marriages ¹	number	66,368	74,387	63,038	59,092	61,138	60,549
Marriages per 1,000 inhabitants	number	6.1	6.6	5.2	4.7	4.7	4.5
Divorces ²	number	13,408	19,168	27,250	26,807	21,484	19,727
Divorces per 1,000 inhabitants	number	1.2	1.7	2.2	2.1	1.6	1.5
Births	number	114,451	136,122	120,765	105,251	128,764	116,505
Births per 1,000 inhabitants	number	10.5	12.0	9.9	8.4	9.8	8.7
Deaths	number	122,859	123,726	118,846	123,089	143,367	146,475
Deaths per 1,000 inhabitants	number	11.3	10.9	9.8	9.8	10.9	10.9
Surplus of births or deaths respectively (-)	number	-8,408	12,396	1,919	-17,838	-14,603	-29,970
Immigration across the state border	number	233,676	406,818	289,307	258,314	323,001	455,877
Emigration across the state border	number	168,212	191,126	215,938	212,699	289,763	356,753
Surplus of immigration	number	65,464	215,692	73,369	45,615	33,238	99,124
Naturalisations	number	8,704	11,823	20,622	12,021	20,192	36,103

¹ From 2018 onwards including same-sex marriages. – ² From 2019 onwards including same-sex divorces.

Marriages and divorces in Bavaria since 1952* in thousands



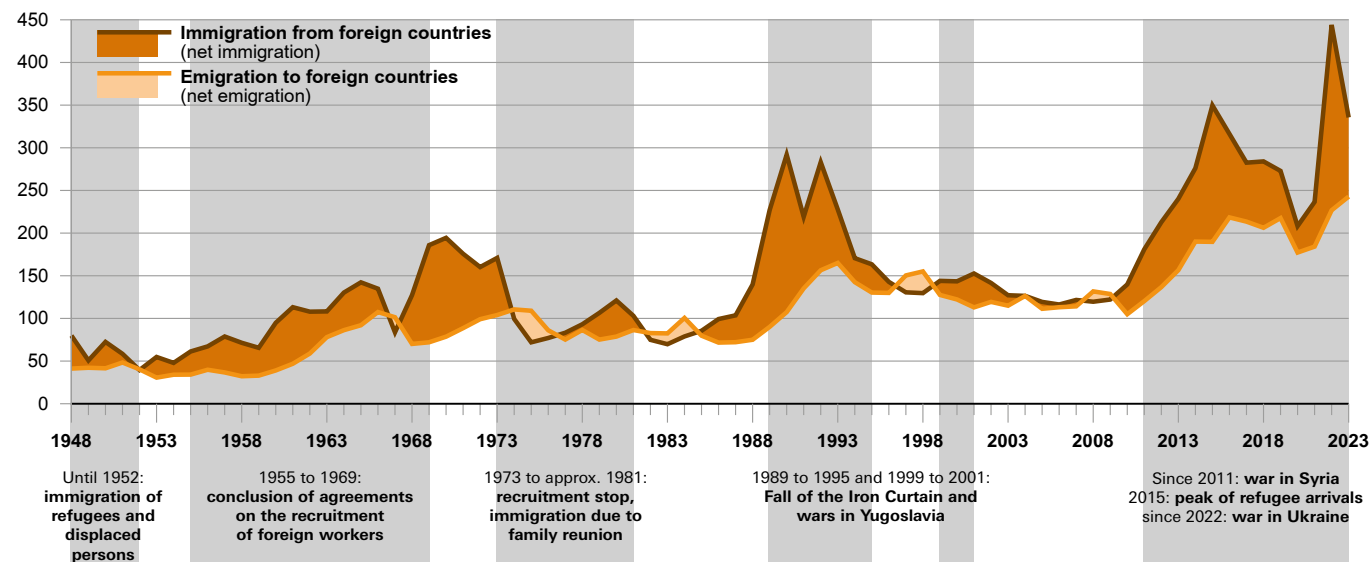
* Coming into effect of the First Act to Reform Marriage and Family law in 1977.

1 An estimated undercoverage of 1900 cases must be assumed for the 2009 statistics of dissolutions of marriages in Bavaria. This is due to a complete revision of the order to collect statistical data on family matters, which was carried out on 1 September 2009 as part of the Act to Reform Procedure in Family and Non-Contentious Matters and led to a modification in the software used by the reporting units.

2 From 2018 onwards including same-sex marriages.

3 From 2019 onwards including same-sex divorces.

Migration across Bavaria's borders since 1948 in thousands



Public healthcare

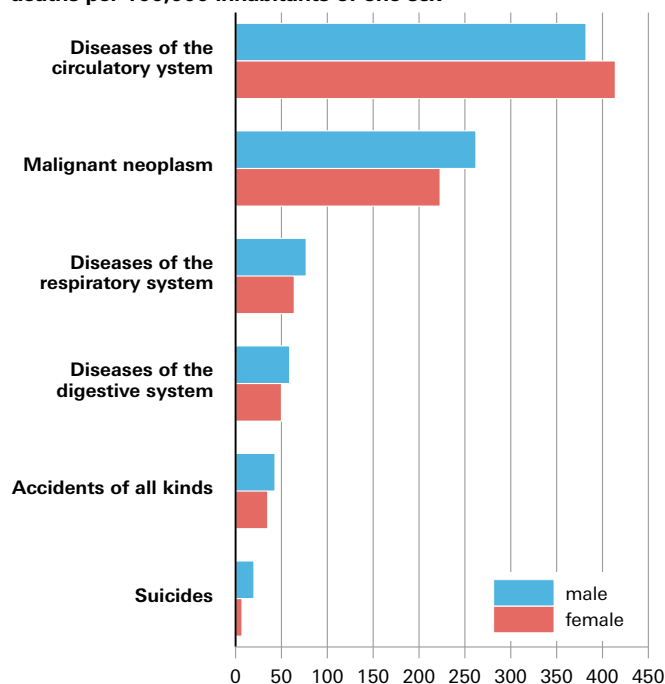
Physicians | Pharmacies | Hospitals | Causes of death

Description	Unit	1980	1990	2000	2010	2020	2023
Physicians in private practice on 31 December ¹	number	11,351	14,944	21,417	24,478	28,263	29,441
Dentists in private practice on 31 December ²	number	6,412	7,242	8,323	9,924	11,642	12,284
Public pharmacies on 31 December	number	2,827	3,278	3,431	3,430	3,020	2,785
Hospitals on 31 December ³	number	736	436	406	373	353	353
therein hospital beds ⁴	number	124,931	91,227	83,484	75,789	76,031	75,098
full-time physicians ⁵	number	12,530	•	16,740	22,747	31,405	33,174
nurses	number	41,686	•	61,836	62,171	77,136	81,812
Deaths caused by ... per 100,000 inhabitants ⁶							
Diseases of the circulatory system in total ⁷	number	538.0	543.8	467.0	412.1	380.2	398.4
Malignant neoplasms	number	249.3	254.9	243.6	244.1	245.1	242.6
Diseases of the respiratory system	number	70.5	69.3	59.4	67.4	65.3	70.2
Diseases of the digestive system	number	60.2	49.1	45.7	49.9	49.8	54.4
Accidents of all kind	number	54.8	39.1	24.9	18.2	34.2	39.0
Suicides	number	20.6	17.6	16.1	14.1	11.6	13.6

¹ From 2000 onwards figures from the Bavarian Medical Association. – ² From 2000 onwards, figures from the Bavarian Dental Association; these membership statistics have been revised and may therefore differ from earlier publications. – ³ Data on hospitals in column 2023: data of 2022. From 1990 onwards, numbers are not comparable with earlier years due to a changed definition of hospitals. – ⁴ 1980: on December 31; from 1990 onwards: annual average. – ⁵ From 2018 onwards: including dentists. – ⁶ Figures on deaths relate to the year 2022. –

⁷ Due to a revision of the statistics on causes of death, the definition of these items has changed several times.

Mortality in Bavaria 2022 by selected causes of death: deaths per 100,000 inhabitants of one sex



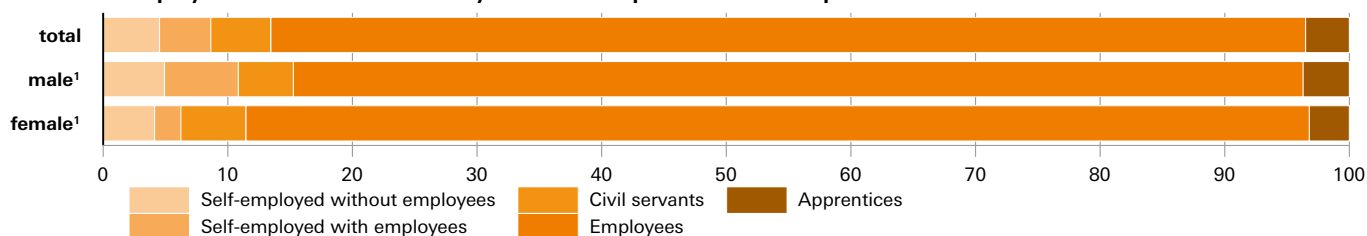
Employment

Employment | Unemployment

Description	Unit	1980	1990	2000	2010	2020	2023
Total of persons in employment ¹	1,000	5,175	5,731	5,879	6,358	...	7,267
male	1,000	3,064	3,314	3,308	3,452	...	3,870
female	1,000	2,111	2,418	2,571	2,906	...	3,397
of which aged under 25 years	%	21.7	17.9	12.7	11.8	...	10.2
25 to under 40 years	%	32.7	36.9	39.7	31.0	...	32.3
40 to under 65 years	%	43.1	43.5	46.2	55.0	...	53.8
65 years or older	%	2.5	1.7	1.4	2.2	...	3.7
By professional status ²							
Self-employed	1,000	539	569	682	769	...	630
Employees	1,000	4,295	4,927	5,097	5,518	...	6,605
Employment rate ³							
total	%	47.5	50.7	48.3	50.8	...	54.4
male	%	58.9	60.6	55.7	56.3	...	58.4
female	%	37.1	41.5	41.2	45.6	...	50.5
Foreign workers in employment ⁴	1,000	337	325	344	363	892	1,082
Unemployed people ⁵	number	147,714	240,745	339,537	299,448	275,075	257,096
Unemployment rate ^{5, 6}	%	3.5	5.1	6.3	4.5	3.6	3.4
Total of open jobs registered ⁵	number	61,218	71,131	89,588	50,333	100,066	149,006
Persons on a job retention scheme ⁵	number	23,384	9,870	7,146	89,750	545,717	42,581

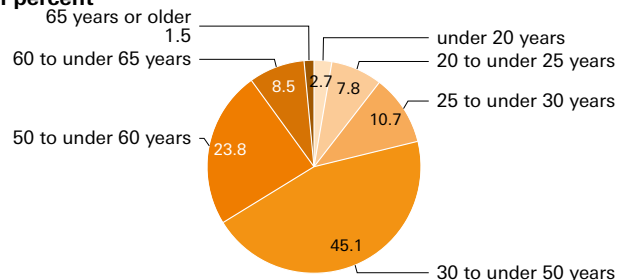
¹ Results of the microcensus. Data for reference year 2020 is not included for pandemic-related quality reasons. – ² Family workers are not shown separately. They are included in the total number of people in work. – ³ Proportion of economically active population in the total population. From this current publication of the Yearbook onwards, the employment rate is shown. In previous years, the labour force participation rate is reported. – ⁴ Employees subject to social insurance contributions on 30 June. – ⁵ Annual average in each case. – ⁶ Unemployed as a percentage of the dependent employed civilian labour force or, from 2003 onwards, as a percentage of total employed civilian labour force.

Persons in employment in Bavaria in 2023 by sex and occupational status in percent



Results of the microcensus – main residence population.
Persons withholding this information were added to total.
¹ Including family workers, not displayed separately in the chart.

Employees subject to social insurance contributions in Bavaria at place of work on 30 June 2023 by age groups in percent



Source: analyses based on labour statistics of the Federal Employment Agency; preliminary results.

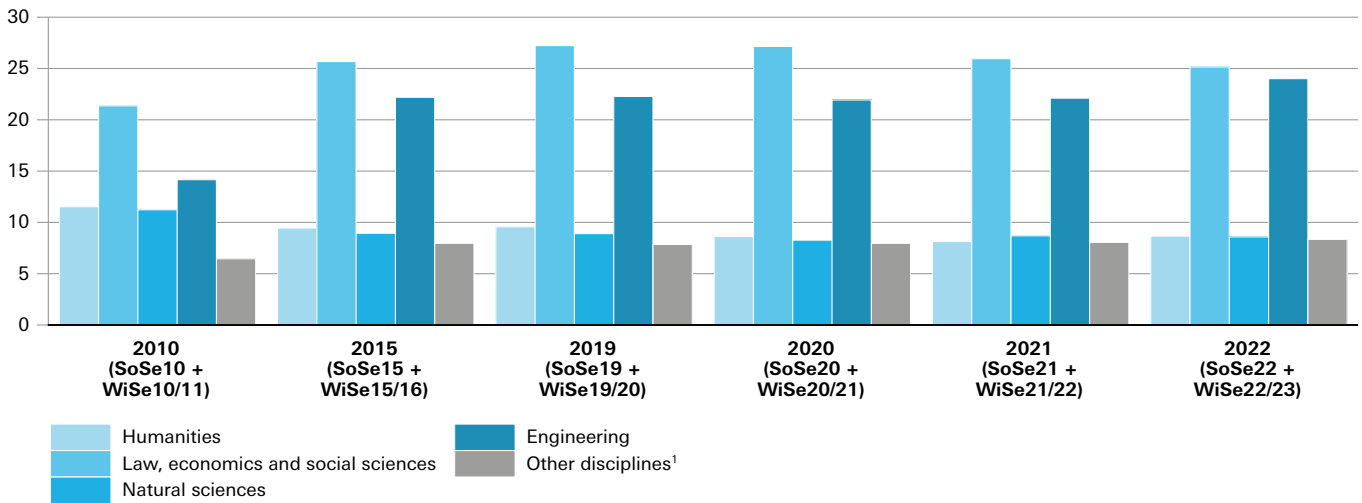
Education and Culture

Schools | Higher education

Description			Unit	1980	1990	2000	2010	2020	2023
Volksschulen on 1 October (from 2012 primary schools and schools including years 5–9 or 5–10 but excluding Gymnasien) ¹	schools	number		2,832	2,813	2,858	3,166	3,289	3,292
	pupils	number		948,543	750,320	858,128	665,334	636,972	672,495
	teaching staff	number		42,328	44,902	48,088	44,185	44,550	44,880
Realschulen on 1 October ^{1,2}	schools	number		332	333	335	368	379	378
	pupils	number		178,770	121,531	166,902	242,516	214,286	215,715
	teaching staff	number		8,388	8,900	10,194	14,271	15,605	15,862
Gymnasien on 1 October ¹	schools	number		395	395	400	413	433	434
	pupils	number		329,554	272,240	322,056	387,761	314,712	324,121
	teaching staff	number		18,173	20,573	21,779	26,367	25,382	26,207
Berufsschulen on 20 October ^{1,3}	schools	number		273	258	235	228	228	229
	pupils	number		390,716	292,853	298,008	285,106	257,388	242,819
	teaching staff	number		6,581	8,003	8,195	8,068	8,788	8,500
Total number of students in higher education ⁴		number		152,857	257,453	213,301	287,432	404,705	403,435
oh which universities		number		116,290	190,439	150,814	189,270	250,398	249,861
art colleges		number		2,162	2,492	3,046	3,299	3,675	3,758
universities of applied sciences (including universities of administrative science)		number		33,822	63,718	58,788	94,277	150,063	149,268

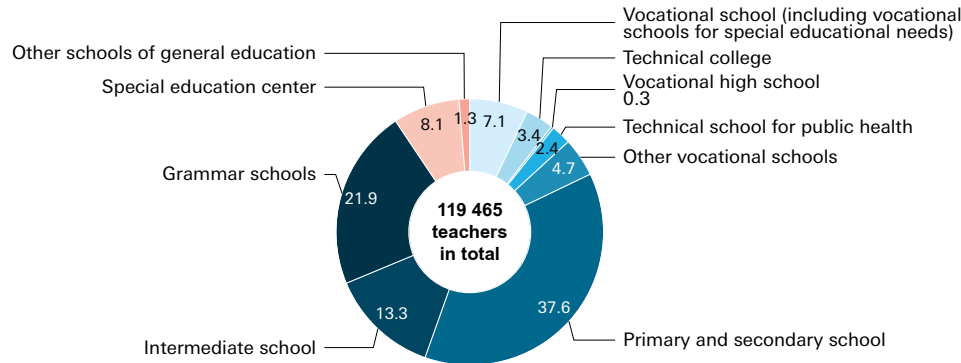
¹ For technical reasons, data of 2022 is reported here. – ² Including secondary schools (years 5–10, excluding grammar schools) for special educational needs. – ³ Up to and including 2002 data as of 15 October; including vocational schools for special educational needs. – ⁴ In winter semester 2022/23 including dual enrollment.

First year students in Bavaria from academic year 2010 onwards by disciplines in thousands



* New and altered assignment of academic disciplines to scientific fields from winter semester 2015/16 onwards.
¹ Includes the following academic disciplines: medicine, public health, art and art history, agriculture, forestry, nutritional science, Veterinary medicine, sports, other disciplines and unclassified disciplines.

Full-time and part-time teaching staff in Bavaria in school year 2022/23 by school type in percent

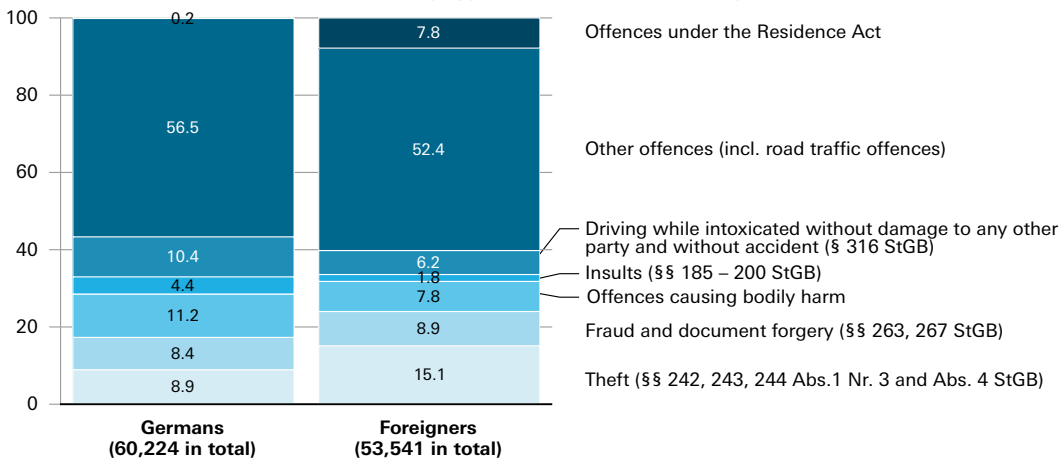


Justice and Public security

Final convictions | Criminal offences

Description	Unit	1980	1990	2000	2010	2020	2023
Total number of final convictions	number	122,016	129,945	145,903	125,229	116,980	113,765
of which adults	number	91,783	109,455	120,749	102,980	103,383	101,928
young persons aged 18 – 20	number	18,283	14,090	15,529	12,831	8,694	7,389
young persons aged 14 – 17	number	11,950	6,400	9,625	9,418	4,903	4,448
of which convictions for road traffic offences	number	52,585	51,459	43,798	29,801	29,145	29,530
convictions excluding road traffic offences	number	69,431	78,486	102,105	95,428	87,835	84,235

Defendants convicted in Bavaria 2023 by type of criminal offence in percent



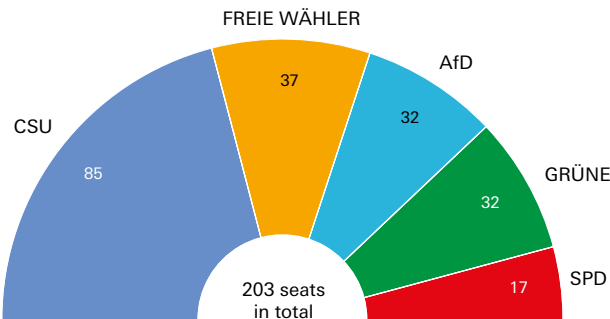
Elections*

Elections for the Landtag (Bavarian State Parliament) |
Elections for the German Bundestag (Federal Parliament) | European elections |
District elections | Municipal elections | Petitions for a referendum | Referendum

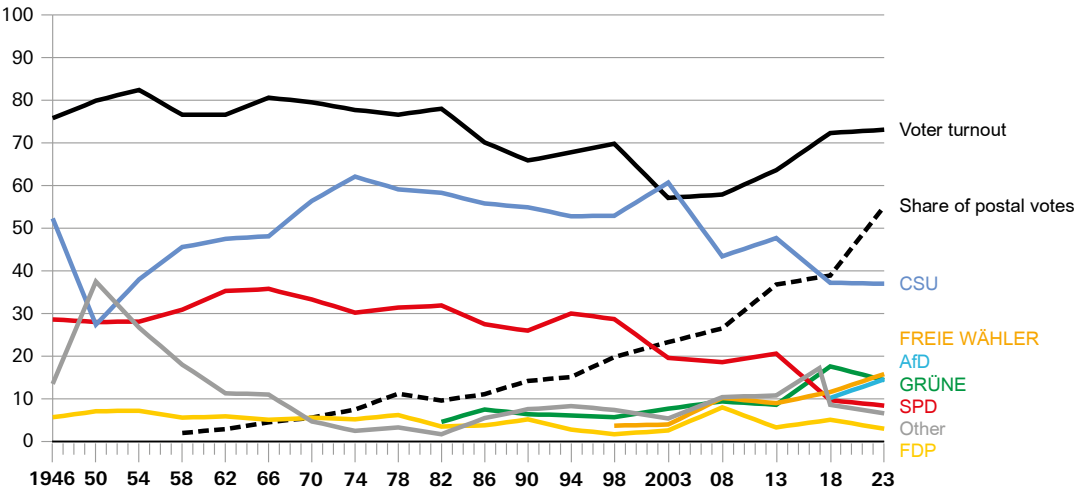
Description	Unit	Share of postal votes	Voter turnout	CSU	FREIE WÄHLER	AfD	GRÜNE	SPD	FDP	Other
Elections for the Bavarian Parliament of 8 October 2023										
Percentage of total votes	%	73.1	55.1	37.0	15.8	14.6	14.4	8.4	3.0	6.6
Elections for the Bundestag (federal parliament) of 26 September 2021										
Percentage of second votes	%	79.9	62.4	31.7	7.5	9.0	14.1	18.0	10.5	9.2
European election of 9 June 2024										
Percentage of votes	%	65.4	53.7	39.7	6.8	12.6	11.8	8.9	3.9	16.1

* German political parties
CSU: Christian Social Union
FREIE WÄHLER: Free Voters
AfD: Alternative for Germany
GRÜNE: Alliance 90/The Greens
SPD: Social Democratic Party
CDU: Christian Democratic Union
FDP: Free Democratic Party
Die Linke: The Left
SSW: South-Schleswigian Voter's Association

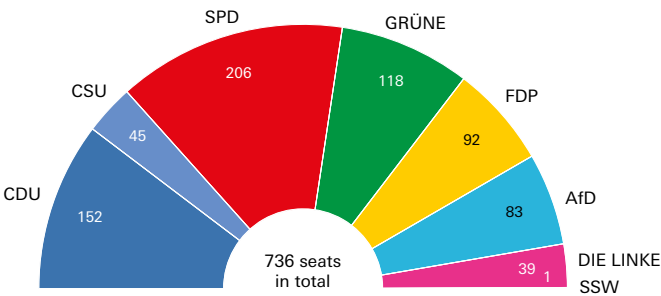
Composition of the 19th Bavarian State Parliament
8 October 2023



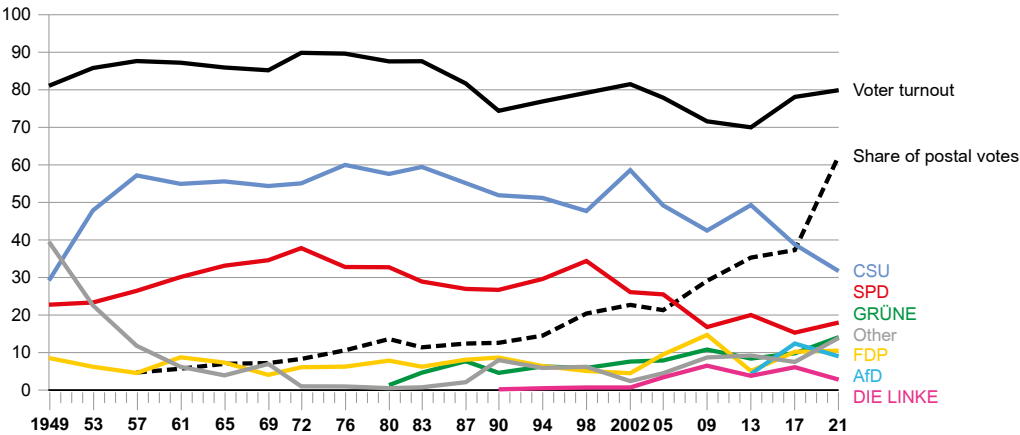
Bavarian parliamentary elections since 1946: voter turnout, share of postal votes, total share of votes in percent



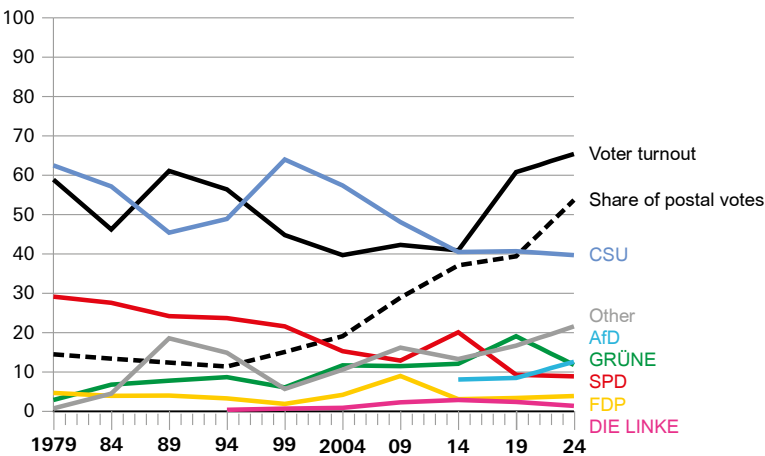
Composition of the 20th German Bundestag (Federal Parliament)
 26 September 2021



Elections for the German Bundestag (Federal Parliament) since 1949:
 voter turnout, share of postal votes, total share of votes in percent



European Parliament elections since 1979:
 voter turnout, share of postal votes, total share of votes in percent



Agriculture and Forestry

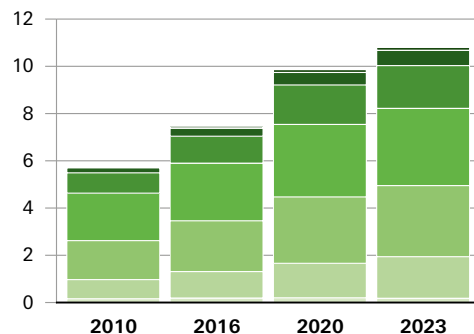
Agriculture holdings | Land use | Harvesting | Livestock farming

Description	Unit	1980	1990	2000	2010	2020	2023
Agricultural holdings (2000: value of 1999)	number	243,372	198,765	149,057	97,735	84,217	81,050
including an agricultural area of							
2 to under 5 ha / from 2010 under 5 ha	number	49,374	35,409	23,112	4,035	2,553	2,410
5 to under 10 ha	number	62,282	44,801	29,684	17,435	15,789	15,450
10 to under 20 ha	number	77,607	58,909	38,317	27,334	22,120	21,000
20 to under 50 ha	number	50,481	53,255	44,918	30,968	24,224	22,710
50 to under 100 ha	number	3,053	5,629	11,050	13,906	13,977	13,580
100 ha or over	number	575	762	1,976	4,057	5,554	5,910
Total agricultural area	1,000 ha	3,506	3,416	3,279	3,137	3,108	3,087
of which permanent pasture	1,000 ha	1,393	1,302	1,169	1,071	1,071	1,040
arable land	1,000 ha	2,083	2,089	2,092	2,052	2,023	2,033
including cereals for the production of grain (including seed)	1,000 ha	1,337	1,216	1,216	1,168	1,058	1,040
Grain harvest (with grain maize from 1990 with corn-cob-mix)	1,000 t	5,635	7,268	7,667	7,274	7,964	7,159
Potato harvest	1,000 t	2,518	1,953	2,417	1,648	1,911	1,487
Sugar beet harvest	1,000 t	4,003	4,814	5,183	4,253	5,308	4,988
Vegetable harvest	1,000 t	110	175	373	487	611	606
Fruit harvest in commercial fruit production (fruit trees only)	1,000 t	34	33	49	38	47	40
Grape must harvest	1,000 hl	120	493	480	354	268	425
Livestock (1980 to 1990: 3 December; 2000: 3 May; 2010, 2020: 1 March; 2023: 3 November) of							
cattle	1,000	4,942	4,814	3,977	3,356	2,963	2,804
including dairy cows	1,000	1,986	1,809	1,416	1,244	1,118	1,057
pigs	1,000	4,146	3,716	3,731	3,654	3,070	2,436
sheep	1,000	292	387	479	388	313	265
Cow's milk production ¹	1,000 t	8,493	8,142	7,650	7,759	8,228	8,208
Total slaughter number ²	1,000 t	919	1,051	868	847	773	662
of which beef (excluding veal)	1,000 t	422	552	366	314	314	282
pork	1,000 t	478	486	493	528	455	378
Poultry meat ³	1,000 t	66	72	63	138	191	184
Production of table eggs ⁴	mn pcs.	–	1,032	921	844	1,077	1,127

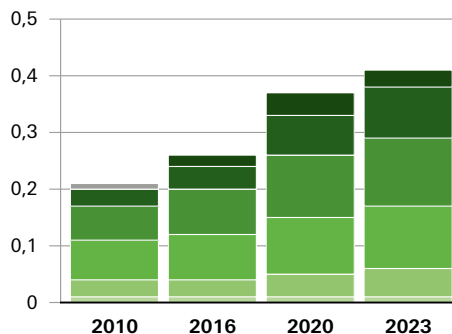
¹ From 2010 onwards, figures from the Federal Office for Agriculture and Food; 2010 cow, goat, milk ewes and buffalo milk; 2023 preliminary results. – ² Meat production from commercial slaughter (excluding poultry meat) from animals of domestic or foreign origin. – ³ From 2010 onwards, figures from the Federal Statistical Office of Germany; all poultry slaughterhouses with approval in accordance with EU hygiene legislation; up to and including 2009: poultry slaughterhouses with a minimum monthly capacity of 2 000 animals. – ⁴ Holdings with a minimum of 3 000 places for laying hens excluding places for poultry reproduction and breeding.

Organic farming in Bavaria 2010, 2016 and 2020 by size classes of agricultural area (AA)

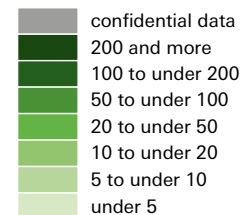
**Agricultural holdings
in thousands**



**Agricultural areas
in thousands of hectares**



**Farms with an AA
of ... hectares**



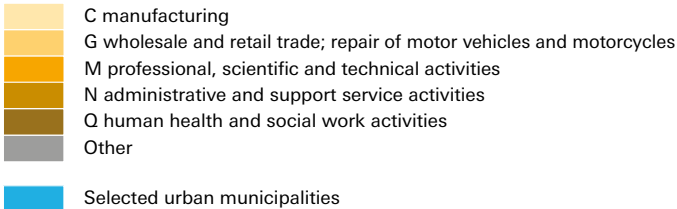
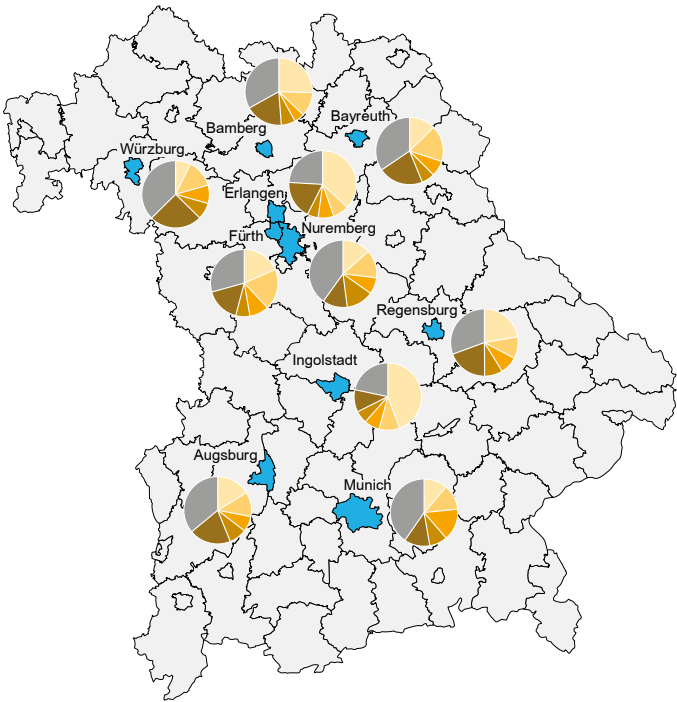
Legal units and local units

Business notifications | Insolvencies

Description	Unit	1980	1990	2000	2010	2020	2023
Business notifications¹							
Registrations	number	38,662	102,935	124,351	150,264	118,517	119,868
including newly founded enterprises ²	number	•	78,318	94,523	122,834	94,368	95,916
De-registrations	number	27,115	68,623	104,628	117,107	94,351	103,763
including complete liquidation	number	•	42,530	68,755	87,335	71,802	80,170
Business insolvencies	number	1,033	1,432	3,073	3,837	2,172	2,527

¹ Excluding amusement and vending machine operators as well as itinerant trade, since 2017 excluding itinerant trade. – ² Up to and including 2002 referred to as newly formed enterprises (newly founded enterprises and new formations through mergers and split-offs).

Economic structure of the ten largest Bavarian cities by population, 2022 for selected Economic sections by share of dependent employees in percent



Manufacturing industry

Manufacturing, mining and quarrying | Construction industry | Energy consumption

Description	Unit	1980	1990	2000	2010	2020	2023
Manufacturing, mining and quarrying¹							
Local units	number	10,040	9,889	8,057	7,134	7,903	8,081
Total number of employees	number	1,385,601	1,443,363	1,207,466	1,138,089	1,299,507	1,327,495
including intermediate goods producers	number	x	x	x	395,391	459,996	464,618
capital goods producers	number	x	x	x	517,761	603,109	621,875
durable goods producers	number	x	x	x	41,955	42,438	38,559
consumer goods producers	number	x	x	x	181,099	192,108	200,644
Gross wages and salaries	mn €	21,554	35,175	43,038	48,083	68,713	77,896
Total turnover (excluding VAT)	mn €	93,671	157,808	246,619	309,984	348,781	502,583
including intermediate goods producers	mn €	x	x	x	84,336	97,120	127,705
capital goods producers	mn €	x	x	x	170,458	194,811	304,282
durable goods producers	mn €	x	x	x	•	•	•
consumer goods producers	mn €	x	x	x	36,130	42,383	53,780
including non-domestic turnover	%	25.7	32.2	40.3	51.4	53.5	58.1
Main construction industry (all local units)							
Local units end of June	number	11,608	14,489	15,408	13,446	13,516	15,256
Employees at the end of June	number	271,289	240,392	180,788	128,541	168,849	178,223
Hours worked in June	1,000	–	–	18,868	14,519	17,558	18,307
Wages in June	mn €	–	–	395	306	512	601
Construction turnover in the previous year (excluding VAT)	mn €	–	–	17,475	15,491	26,480	31,443
Energy Industry²							
Total of final energy consumption	TJ	1,168,000	1,195,515	1,371,207	1,404,879	1,379,580	1,391,667
including consumption of coals	TJ	53,000	36,660	24,852	16,807	14,096	15,634
petroleum products	TJ	768,000	699,621	732,527	618,889	563,045	509,245
gases	TJ	153,000	210,084	279,478	300,011	273,989	310,258
electricity	TJ	165,000	214,095	260,382	296,338	271,898	279,246
other energy sources	TJ	29,000	35,055	73,966	172,833	256,553	277,284

¹ Local mining and manufacturing units (including crafts and trades) of enterprises with 20 or more employees. For local units and employees monthly average. Reference month September since 2007. From 2009 onwards according to Classification of Economic Activities, 2008 edition. – ² Final energy consumption refers to the final energy consumption of all economic sectors, private households and other consumers. For 2023, results of 2021 are shown.

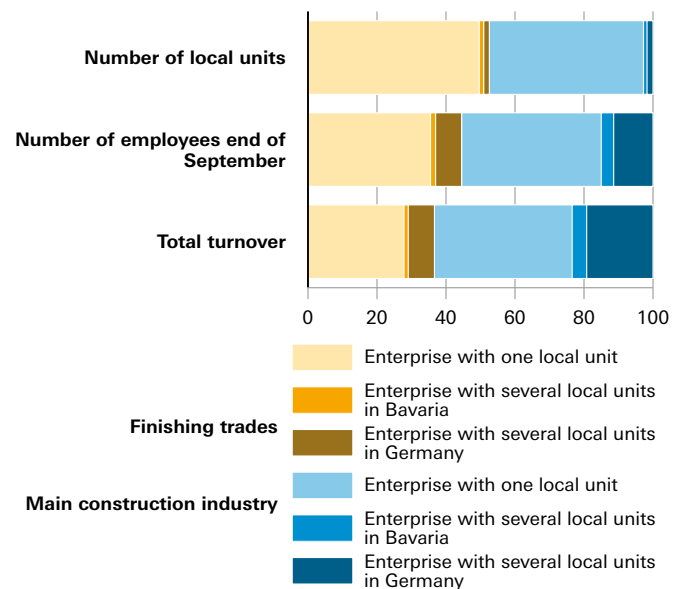
Local units and employees* in the manufacturing industry** in Bavaria 2023 by employee size classes



* As at: end of September 2023.

** Including mining and quarrying. Local units of enterprises with 20 or more employees in general.

Key figures of surveys about investments among enterprises in construction industries in Bavaria 2022 by type of unit in percent



Source: annual surveys of investments in the construction industries (structural statistics).

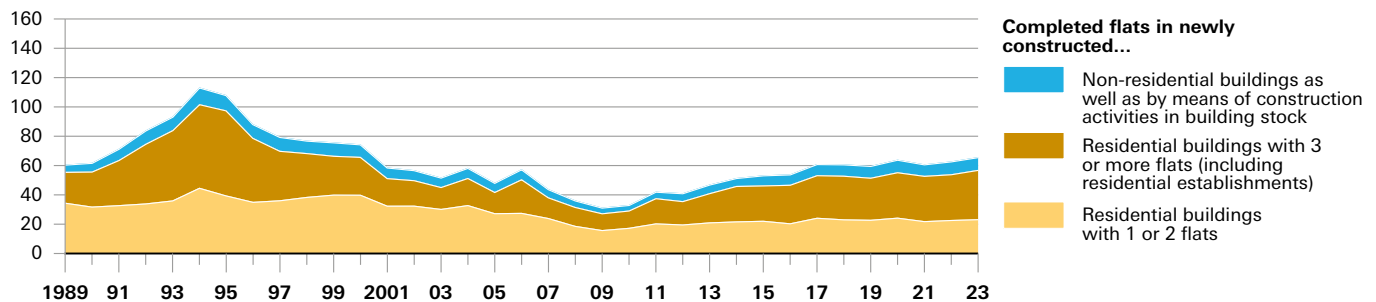
Construction and Housing

Building permits | Works completions | Building stock

Description	Unit	1980	1990	2000	2010	2020	2023
Residential buildings completed (new constructions) ¹	number	43,470	30,077	38,190	17,392	25,449	23,459
of which buildings with one flat	number	32,037	22,863	29,792	14,518	19,701	16,772
two flats	number	9,379	4,588	5,177	1,520	2,395	3,336
three or more flats ¹	number	2,054	2,626	3,211	1,354	3,353	3,351
Total of completed flats	number	75,925	61,879	74,366	33,137	64,013	65,770
of which flats with 1 or 2 rooms	number	6,129	6,169	6,035	3,979	16,743	19,821
3 or 4 rooms	number	19,826	22,545	24,062	9,987	23,691	24,814
5 rooms or more	number	49,970	33,165	44,269	19,171	23,579	21,135
Total of residential buildings on 31 December ²	number	2,095,681	2,338,156	2,687,868	2,934,602	3,112,961	3,182,237
Total of flats on 31 December ³	number	4,411,616	4,752,471	5,577,859	6,027,400	6,549,811	6,734,014
of which flats with 1 or 2 rooms	number	550,849	439,872	527,518	562,588	911,351	966,226
3 or 4 rooms	number	2,149,326	2,144,392	2,484,597	2,616,670	2,694,417	2,762,510
5 rooms or more	number	1,711,441	2,168,207	2,565,744	2,848,142	2,944,043	3,005,278

¹ From 1990 onwards including residential establishments. – ² 2020 and 2022 including residential establishments. – ³ 2020 and 2022 including flats in residential establishments.

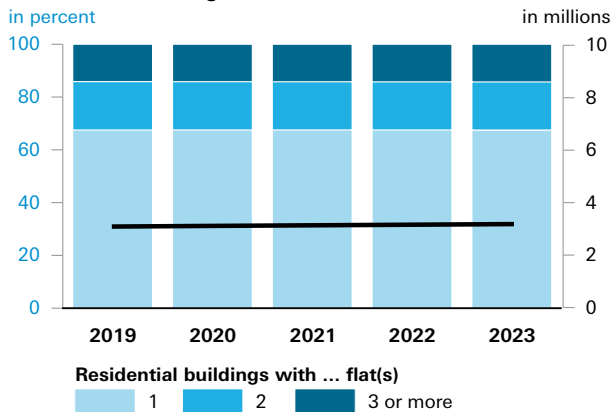
Residential buildings completed* in Bavaria since 1989 in thousands



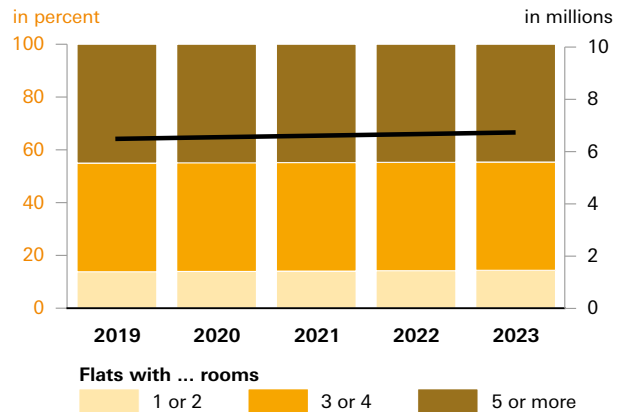
* Including flats in permit exemption process.

Total* of residential buildings and dwellings in Bavaria since 2019

Residential buildings



Flats



* Intercensal updates based on the final results of the 2011 census of buildings and housing (GWZ).

Trade, Accommodation and Food services

Foreign trade | Tourism

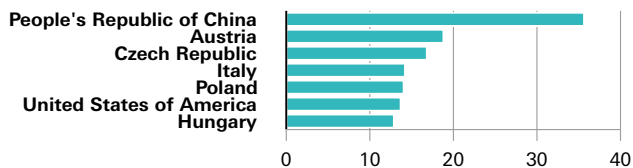
Description	Unit	1980	1990	2000	2010	2020	2023
Foreign trade (preliminary results for 2023)							
Exports total ¹	mn €	24,122	51,330	92,878	144,011	168,192	230,783
of which food	mn €	2,151	3,461	4,712	7,044	9,444	12,096
industrial products	mn €	21,971	47,869	88,166	135,008	156,831	213,696
of which raw materials	mn €	347	455	714	904	810	1,557
semi-finished goods	mn €	1,509	2,177	3,245	6,307	6,665	9,367
finished goods	mn €	20,115	45,238	84,207	127,798	149,356	202,771
of which intermediate products	mn €	2,594	5,157	8,465	11,361	11,989	14,346
end products	mn €	17,520	40,081	75,742	116,437	137,366	188,425
of which Europe	mn €	18,279	38,175	64,010	94,268	109,646	149,161
including EU countries ²	mn €	15,074	31,954	48,709	81,603	85,781	121,251
Africa	mn €	1,181	1,270	1,531	2,817	2,308	3,003
Americas	mn €	2,435	6,019	15,517	18,474	22,235	36,083
Asia	mn €	2,046	5,402	11,070	26,988	32,566	40,182
Australia and Oceania	mn €	181	461	718	1,437	1,426	2,218
miscellaneous ³	mn €	–	–	–	27	11	136
Imports total ¹	mn €	24,017	42,669	85,034	129,429	180,684	240,793
of which food	mn €	1,888	3,002	4,366	7,096	10,580	13,243
industrial products	mn €	22,129	39,668	80,668	117,070	162,903	213,560
of which raw materials	mn €	5,503	3,024	5,056	14,677	8,457	9,726
semi-finished goods	mn €	2,805	3,896	5,397	5,474	6,140	7,250
finished goods	mn €	13,822	32,748	70,216	96,919	148,306	196,584
of which intermediate products	mn €	2,942	5,458	7,347	10,450	10,920	13,493
end products	mn €	10,879	27,290	62,868	86,469	137,386	183,092
of which Europe	mn €	15,533	30,322	55,229	86,021	125,147	151,846
including EU countries ²	mn €	11,721	23,581	36,765	72,393	105,220	130,606
Africa	mn €	3,144	2,024	3,341	3,886	3,619	5,691
Americas	mn €	1,867	4,007	9,695	10,540	14,101	17,626
Asia	mn €	3,452	6,259	16,642	28,764	37,553	65,239
Australia and Oceania	mn €	22	57	118	219	166	214
miscellaneous ³	mn €	–	–	–	0	98	175
Tourism⁴							
Beds available in accommodation establishments	number	391,127	493,289	557,465	559,833	530,333	598,957
Guest arrivals	1,000	12,586	21,150	23,827	28,289	19,832	38,857
of which foreign guests	1,000	2,399	4,933	4,844	6,496	2,886	8,855
Overnight stays	1,000	55,990	78,471	78,178	77,877	59,962	100,256
of which foreign guests	1,000	4,814	10,225	10,167	13,472	7,051	19,546

¹ Including return deliveries, replacements etc. – ² Total of EU Member States at the time indicated: 1980: 9; 1990: 12; 2000: 15; 2010, 2020 and 2023: 27. – ³ Ship and aircraft supply, countries and territories not identified etc. – ⁴ In 1980 results from reporting municipalities with a minimum of 5 000 overnight stays. Since then, results for tourist accommodations with 9 or more beds and for campsites with 3 or more pitches; since 2012 with 10 or more beds or pitches. 1990 and 2000 campsite results revised in retrospective. Beds available as of 30 June (beds excluding campsites).

Imports and exports* in Bavaria 2023 by major countries in billions of euros

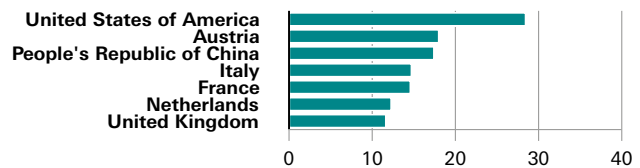
Import by country of origin

Share in total imports: 52.4%



Export by countries of destination

Share in total exports: 50.8%



* Preliminary results.

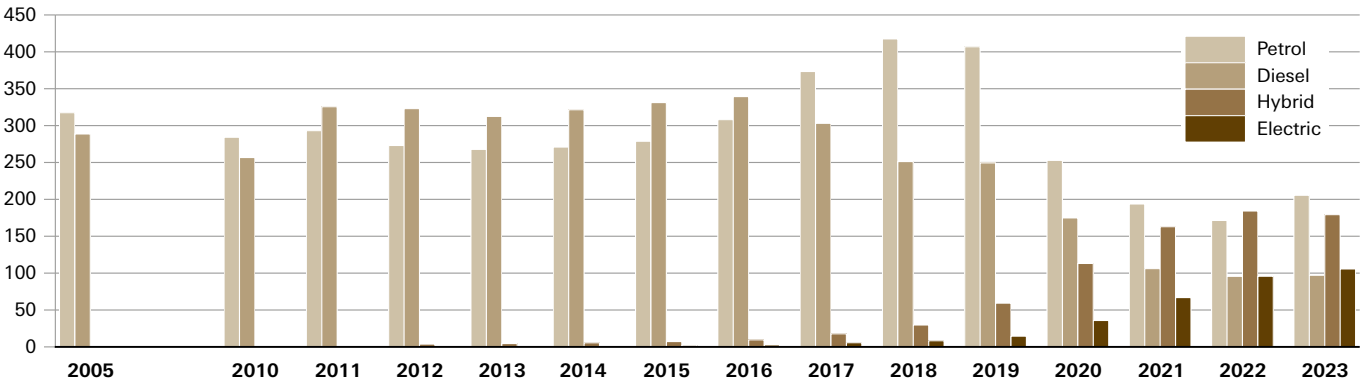
Transport

Road Traffic | Passenger transport | Air transport | Inland waterway transport

Description	Unit	1980	1990	2000	2010	2020	2023
Road Traffic							
Number of motor vehicles on 1 January ¹	1,000	5,031	6,928	8,516	8,630	10,328r	10,702
including passenger cars and estate cars ²	1,000	4,076	5,667	6,774	6,863	8,097r	8,296
per 1,000 inhabitants	number	373	500	556	549	617r	621
total motorbikes ³	1,000	159	319	651	754	962r	1,042
Registration of new motor vehicles	number	506,943	647,714	636,171	633,191	707,544	716,096
including passenger cars and estate cars ²	number	434,467	574,940	531,331	544,668	579,065	589,682
Total of road traffic accidents	number	302,806	334,341	336,139	356,866	345,411	388,817
of which material damage only	number	231,713	269,820	273,023	305,897	299,394	339,354
personal injury	number	71,093	64,521	63,116	50,969	46,017	49,463
fatalities	number	3,002	1,913	1,450	697	484	499
injured persons	number	97,728	88,691	87,004	67,667	57,179	62,359
Air transport							
Passengers (arrival and departure)	1,000	6,502	12,598	25,922	39,479	12,678	43,733
Volume of freight (from 2010 including mail)	t	35,696	67,153	143,801	294,525	155,149	287,337
Rail transport⁴							
Goods received	1,000 t	38,259	31,973	26,524	27,819	27,261	29,665
Goods dispatched	1,000 t	26,482	22,647	19,699	24,555	23,685	24,787
Inland waterway transport							
Goods received	1,000 t	9,179	8,195	7,812	5,376	4,225	2,712
Goods dispatched	1,000 t	7,336	5,336	5,019	3,603	3,479	2,350

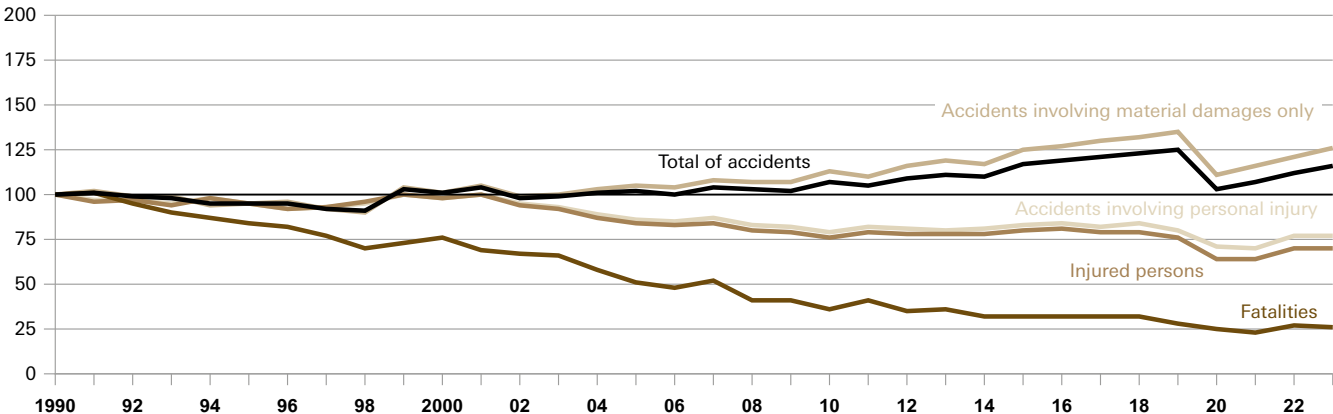
¹ Up to and including 2000 with reference date 1 July. From 2008 onwards, registered vehicles only, excluding vehicles declared as temporarily off the road. – ² From 1996 onwards all passenger cars and other M1 vehicles. – ³ Including motorcycles up to 125cc. – ⁴ From 2023 onwards, including data revisions at the end of the reference year.

New registrations* of road motor vehicles in Bavaria from 2005 onwards by fuel types in thousands



* Source: Federal Motor Transport Authority, Flensburg.

Number of road traffic accidents in Bavaria since 1990: 1990 ± 100



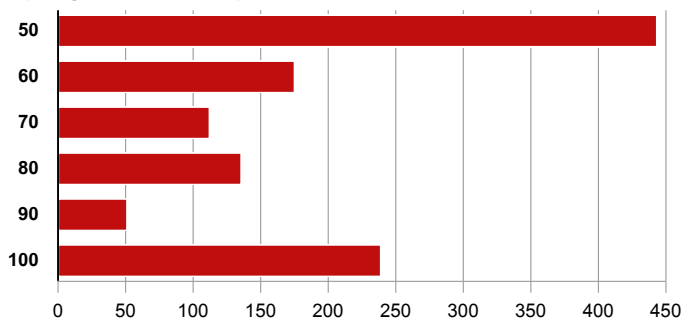
Social care, Child and youth welfare

Health insurance | Pension insurance | Unemployment insurance scheme |
Social welfare | Housing benefits | Day childcare | Child and youth welfare

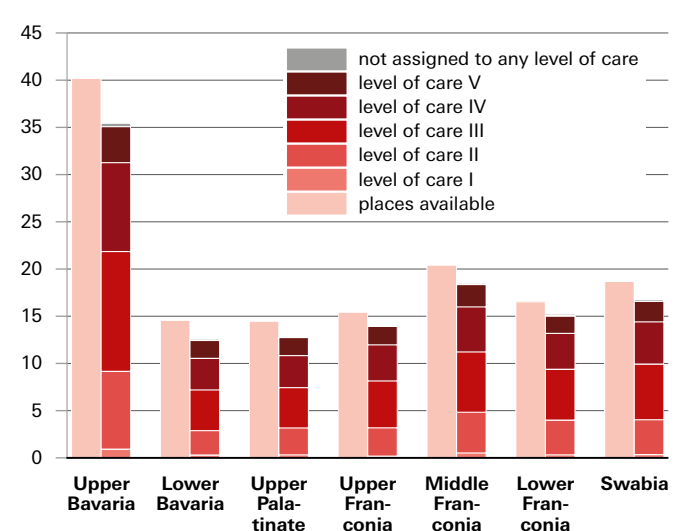
Description	Unit	1980	1990	2000	2010	2020	2023
Public health insurance							
Total of members as an annual average; since 2006: 1 July	1,000	6,178	6,728	7,261	7,603	8,730	8,952
including compulsory members	1,000	3,739	4,100	4,212	4,520	5,289	5,441
voluntary members	1,000	722	748	1,021	762	1,082	1,131
Pension insurance¹							
Total of pensions ²	1,000	1,488	1,591	1,851	3,287	3,448	3,511
of which old-age pensions (up until 1990 „Altersruhegelder“)	1,000	750	880	1,203	2,352	2,511	2,587
Average pension payment per month at standard							
retiree age male	€	•	581	721	1,007	1,265	1,400
female	€	•	213	306	515	766	869
Unemployment insurance scheme and benefits³							
Recipients of citizen's benefits (SGB III) (annual average)	number	88,201	132,812	187,216	152,624	160,795	121,555
Recipients of unemployment benefit II in December	number	14,721	33,549	79,700	463,471	418,355	469,508
Expenditure on unemployment benefit	1,000 €	797,311	1,498,352	2,793,202	2,383,225	3,329,543	2,897,978
unemployment assistance/-benefit ⁴	1,000 €	20,036	294,563	718,059	1,174,172	1,339,345	1,864,817
Social care⁵							
Total recipients of supplementary welfare allowance							
not living in institutions on 31 December ⁶	number	•	•	210,570	9,271	12,375	14,135
per 1,000 inhabitants	number	•	•	17.0	0.7	0.9	1.1
Total gross expenditure ⁷	mn €	763	1,754	2,705	3,481	1,293	1,189
including supplementary welfare allowance	mn €	216	555	818	138	167	171
Total of expenditure per inhabitant only ⁷	€	54	121	188	241	73	64
Total of housing benefits^{5,8}							
Total of households on 31 December ⁹	number	182,187	199,963	97,601	82,274	55,085	57,055
of which households with rent subsidy	number	171,284	181,722	91,223	76,444	52,580	54,210
Day childcare on 1 March							
(1980 – 2000 day care for children (Kindergarten) only)							
places	number	213,952	252,139	368,504	501,565	663,264	732,837
children in care	number	236,856	292,141	368,422	461,177	599,803	645,568
Child and youth welfare⁵							
Expenses from public funds ¹⁰	1,000 €	185,875	281,211	1,458,541	3,833,885	8,755,188	9,730,170

¹ Results from 2003 onwards are based on amendments to the Pension Reform Act in effect since 1 January 1992. – ² From 1980 until 1990: beginning of the year. All other years: end of year. – ³ From 2019 onwards data after revision. ⁴ Unemployment assistance was replaced by basic security benefits for job seekers in 2005; only figures provided by the German Federal Employment Agency are displayed. – ⁵ Row 2023: data of 2022. – ⁶ Reference date figures from the reformed social welfare statistics (from 1994 onwards); due to legal changes as of January 2005, a comparison with earlier years is of limited validity. ⁷ Benefits for asylum seekers and for foreigners who were granted humanitarian protection are not included in the figures from 1990 onwards; benefits of German Social Code (SGB), Book XII are excluded from 2017 onwards (basic security benefits in old age and in cases of reduced earning capacity); from 2020 onwards integration assistance under SGB IX is excluded. – ⁸ From 2005 onwards, only households receiving housing benefits are shown. – ⁹ From 1990 onwards including approvals in retrospective. – ¹⁰ Due to legislative change (child and youth welfare act of 26 June 1990), results from 1991 onwards are comparable to earlier results only to a limited extent.

Severely disabled persons in Bavaria, 31 December 2023, by degree of disability in thousands



Places available and people in need of care in nursing homes in Bavaria on 15 December 2021 by administrative regions and levels of care in thousands



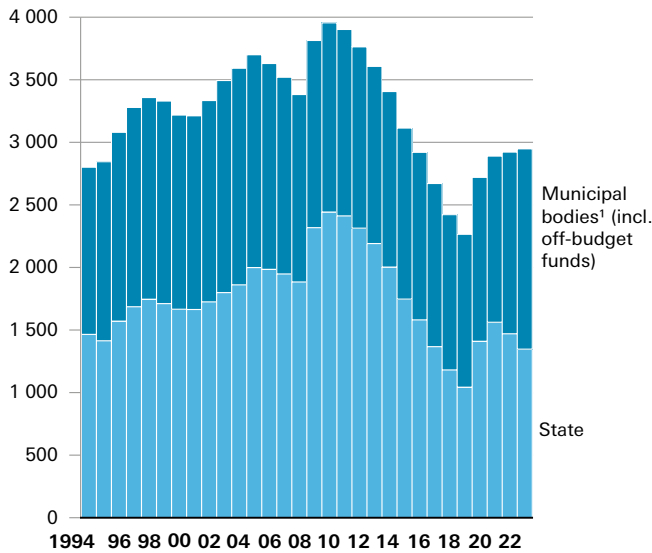
Public finances

Federal, state and municipal finances | Taxes and debt

Description	Unit	1980	1990	2000	2010	2020	2023
Total government expenditure ¹	mn €	24,509	36,075	49,202	70,818	107,165	124,596
of which expenditure of the state of Bavaria	mn €	16,342	23,048	32,410	45,348	72,516	77,810
of the municipalities/municipal associations (ALC)	mn €	11,639	17,668	23,015	34,256	53,363	65,743
Total tax revenue of public budgets	mn €	28,344	43,341	72,294	•	•	•
of which revenue of the federal level	mn €	12,907	19,206	36,339	•	•	•
of the state of Bavaria	mn €	10,866	17,507	26,628	31,091	44,150	54,190
of the municipalities/municipal associations (ALC)	mn €	4,571	6,628	9,327	12,196	19,422	25,259
Total public debt ²	mn €	17,581	29,922	39,211	49,644	35,702	39,482
of which debt of the state of Bavaria	mn €	8,431	17,042	20,303	30,588	18,510	18,040
of the municipalities/municipal associations (ALC)	mn €	8,073	11,241	17,241	18,275	16,047	20,067
Full-time public service personnel ³ at the federal ⁴ level	number	204,297	187,495	58,803	44,178	35,275	34,770
at the level of the state of Bavaria	number	247,606	241,318	225,022	194,055	206,230	206,285
at the level of the municipalities/municipal associations (ALC) ¹	number	174,500	201,297	170,465	118,597	137,210	142,465

¹ Excluding associations performing municipal tasks. – ² Including associations performing municipal tasks; from 2000 onwards: excluding legally independent hospitals. – ³ From 2018 onwards: figures rounded to the nearest multiple of five. – ⁴ Up to and including 1990: including staff at the Bundesbahn and Bundespost (formerly state-owned railway and postal services); including Bundeseseisenbahnvermögen and the German Federal Employment Agency; excluding soldiers; from 2018 onwards: including public bodies and institutions (excluding Federal Employment Agency and social security institutions).

State debt and debt of municipalities per resident in Bavaria since 1994 in euro*



* Long-term debt to the public and non-public sector (excluding cash loans).

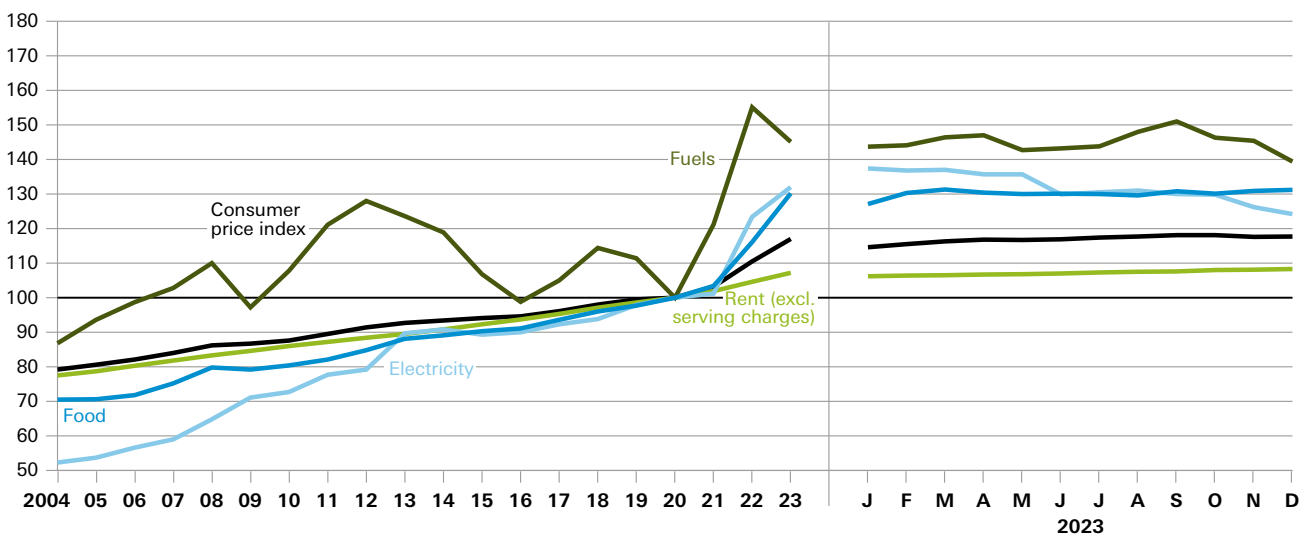
1 From 2000 onwards: excluding legally independent hospitals.

Prices

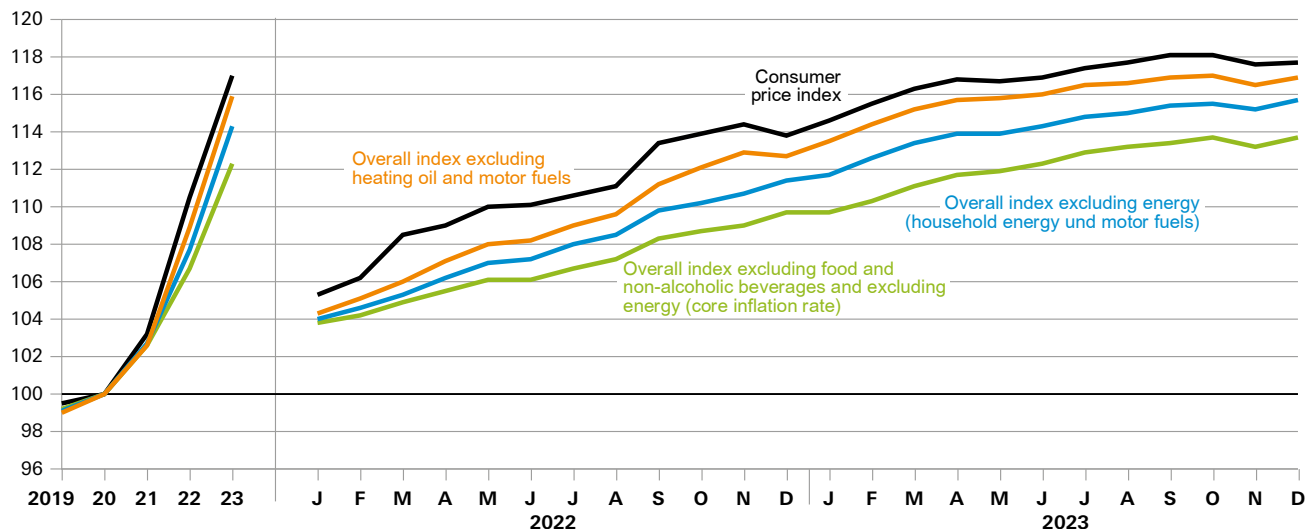
Consumer price index | Construction and Residential property prices

Description	Unit	1980	1990	2000	2010	2020	2023
Consumer price index for Bavaria (2020 ± 100)	%	45.9	59.5	74.0	87.6	100	117.0
of which food and non-alcoholic beverages	%	•	•	67.8	81.2	100	128.9
rent (excl. service charges)	%	36.5	52.5	74.1	86.4	100	106.8
domestic fuel oil	%	66.6	52.0	79.5	128.9	100	203.0
fuels	%	•	•	76.8	107.8	100	145.1
Price index for buildings (2015 ± 100)							
residential buildings	%	45.8	63.7	77.3	89.5	117.0	159.2
office buildings	%	42.6	61.8	76.0	89.7	116.7	161.2
Total purchase values for building land per m²	€	28.73	62.31	100.44	128.49	249.22	219.15
of which land ready for construction	€	40.22	78.44	138.56	223.39	348.76	339.60

Consumer price index in Bavaria since 2019
Development by selected product groups, 2020 ± 100



Consumer price index in Bavaria since 2019
Development by selected product groups, 2020 ± 100



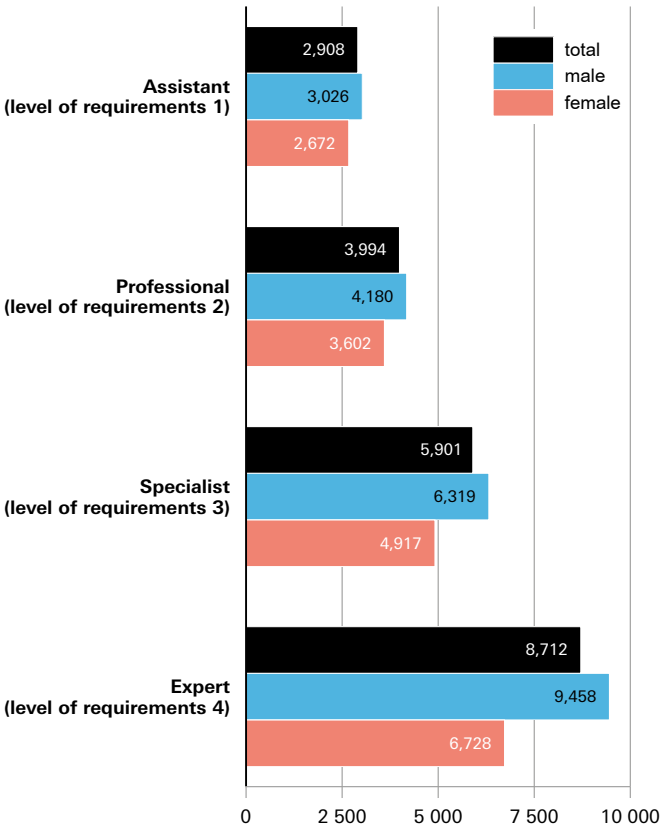
Wages and Salaries (earnings)

Earnings

Description	Unit	1980	1990	2000	2010	2020	2023
Agriculture, forestry, fisheries, manufacturing industry, service sector¹							
Average gross hourly earnings ² of full-time employees in total	€	•	•	•	19.83	25.32	27.76
male	€	•	•	•	21.03	26.54	29.12
female	€	•	•	•	16.73	22.31	24.57
Average gross monthly earnings ² of full-time employees in total	€	•	•	•	3,340	4,162	4,649
male	€	•	•	•	3,547	4,369	4,920
female	€	•	•	•	2,809	3,652	4,032

¹ Up to and including 2020 information on industry and service sector. From 2022 onwards, not all figures are comparable to earlier years' results due to the introduction of the monthly earnings survey. – ² Excluding special grants and allowances.

Average gross monthly earnings (including special grants and allowances) of full-time employees in Bavaria in April 2023 by levels of requirements* and sex in euro



* According to Classification of Occupations (KldB 2010 – revised version 2020) of the Federal Employment Agency.

Equipment and Consumption

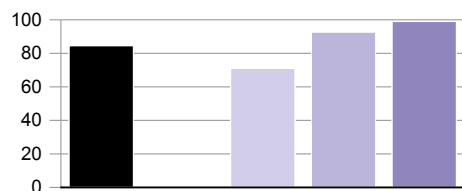
Sample survey of income and expenditure (EVS)
and Continuous household budget surveys (LWR)

Description	Unit	1983	1993	2003	2008	2013	2018
Selected households ^{1, 2}	number	8,200	6,257	8,398	8,434	8,402	8,272
Extrapolated households ¹	in 1,000	4,064	5,045	5,484	5,819	5,946	6,269
Net income per household and month	€	1,788	2,646	3,172	3,248	3,552	4,096
Consumption expenditure per household and month	€	1,389	1,955	2,342	2,418	2,691	3,009
Equipment with consumer durables ³							
Passenger car	%	68.5	78.8	81.6	82.3	81.9	82.0
Dishwasher	%	23.3	41.4	61.6	65.6	70.3	75.8
Freezer	%	50.9	58.0	70.3	57.2	56.4	53.4
Landline telephone	%	85.2	98.3	95.8	91.1	91.6	87.6
Mobile phone	%	•	•	72.4	85.7	92.4	96.5
Personal computer	%	•	20.1	63.9	77.4	87.3	91.5
Television	%	93.6	94.7	94.8	92.8	93.6	93.4
Internet access	%	•	•	48.8	66.1	82.6	93.7

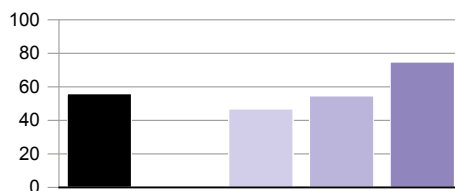
¹ The number of contacted and extrapolated households refers to net household income as well as to private consumer expenditure. The equipment with consumer durables is based on a slightly different number of households. – ² Source: Sample survey of income and expenditure. Changes in survey design regarding quotas in 1993, 1998 and 2018 (e.g. concerning the quota characteristics alien status, single-earner household). In 1998, reduction of contacting period from a year to a quarter of a year. Introductory and final interviews on were not carried out beyond 1998 and 2003 on specific survey topics. For details on methodological changes, please refer to: Statistisches Bundesamt (1978-2018): Einkommens- und Verbrauchsstichprobe. Aufgabe, Methode und Durchführung der EVS, Fachserie 15, Heft 7, www.statistischebibliothek.de/mir/receive/DESeries_mods_00000160, Access date: 26 July 2024. – ³ Share of households with respective consumer durable in total households. In the 1983 and 1993 surveys, no differentiation between fixed (landline connection) and mobile equipment (in-car phone, mobile phone).

Equipment of private households with selected consumer durables in Bavaria on January 1st 2022 by household type, level of equipment* in percent

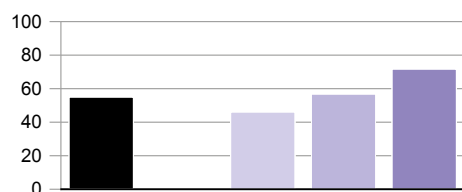
Passenger car



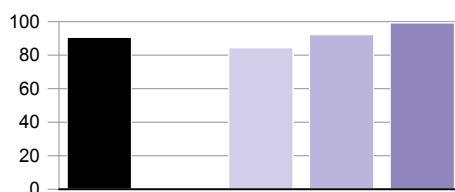
DVD and Blu-ray devices



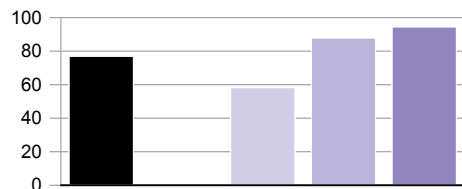
Smart-TV



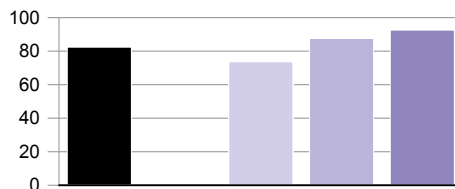
Personal Computer



Dishwasher



Coffee machine



Private households

■ total

Selected household types

■ Single-person household

■ (Married) couples without children

■ (Married) couples with children

* Share of households with respective consumer durables in total of households by household type.

National accounts

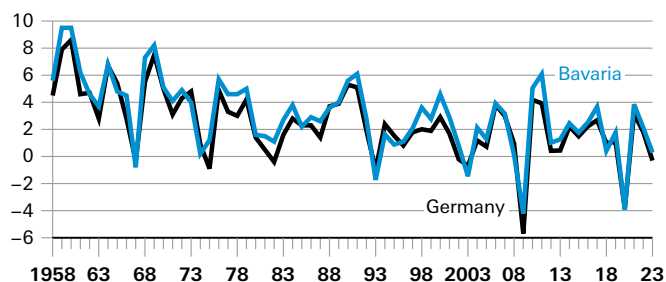
Gross domestic product | Gross value added

Description	Unit	1980	1991	2000	2010	2020	2023
Gross domestic product at market prices	Mn €	...	263,313	357,900	452,128	629,496	768,469
Gross value added at basic prices	Mn €	...	239,415	322,726	406,514	570,804	702,207
of which¹ agriculture, forestry, fishery	%	...	1.5	1.3	0.9	0.7	0.8
manufacturing industry	%	...	37.0	31.7	32.6	32.8	33.7
service sectors	%	...	61.4	67.0	66.5	66.5	65.5
trade, transport, hospitality; information and communication	%	...	19.7	20.1	19.1	20.2	20.8
financial, insurance and business services; real estate	%	...	23.7	27.9	28.1	26.9	26.3
public and other service providers, education and health	%	...	18.0	19.0	19.3	19.4	18.4

National accounts: all figures at current prices. As a consequence of the benchmark revisions in 2011 and 2019, time series up to 1991 and from 1991 up until now are not comparable anymore. Consequently, the time series starts with the year 1991.

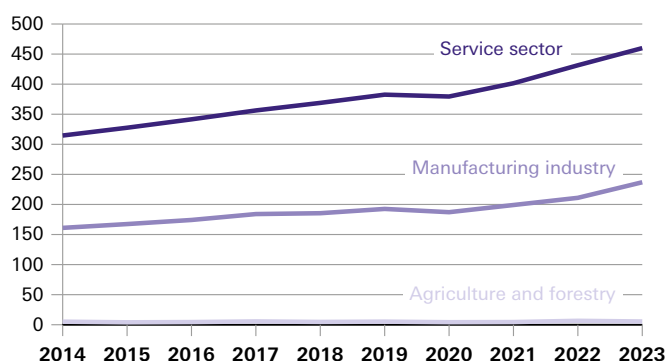
¹ In percent of total gross value added at basic prices.

Growth rates of real gross domestic product in Bavaria and Germany since 1958* in percent



* Results for the periods 1957 to 1970, 1971 to 1991 and 1992 to 2022 are not fully comparable due to different concepts and methods. From 1956 to 1970 at prices of the base year 1991, from 1971 onwards at the previous year's prices and as a chained index.

Gross value added of economic sectors in Bavaria from 2014 in billions of euro

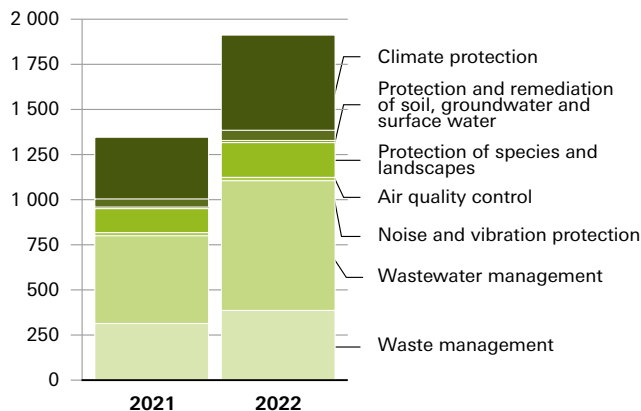


Environment

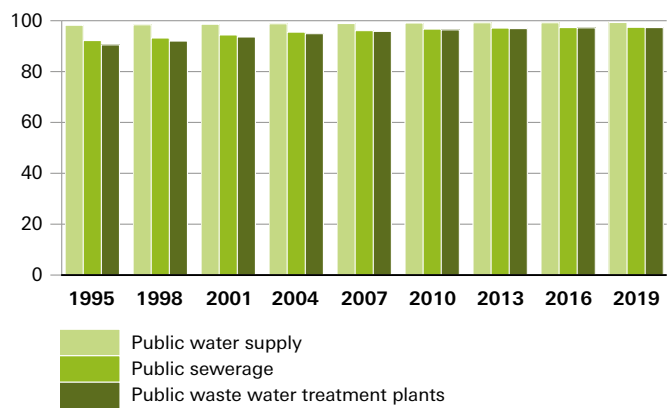
Greenhouse gases | Waste | Water | Environmental economics

Description	Unit	2010	2015	2019	2020	2021	2022
Greenhouse gas emissions	1,000tCO ₂ e	98,389	94,192	95,253	91,166	90,927p	87,882s
Household waste	kg/resident	467	475	480	496	499	455
of which recyclable fraction	kg/resident	158	159	160	164	161	146
residual waste	kg/resident	164	166	167	173	172	162
Number-dependent drinking water fee	€/m ³	1.4	1.5	1.7	1.7	1.7	1.8
Number-dependent wastewater fee	€/m ³	1.8	1.9	2.0	2.0	2.1	2.1
Environmental investment	1,000 €	665,808	1,079,819	1,271,435	1,339,129	1,345,963	1,912,133
including manufacturing industry	1,000 €	205,560	363,187	361,910	407,241	354,342	628,575

Investments in environmental protection in Bavaria by industry (excluding construction), 2021 and 2022 in million of euros

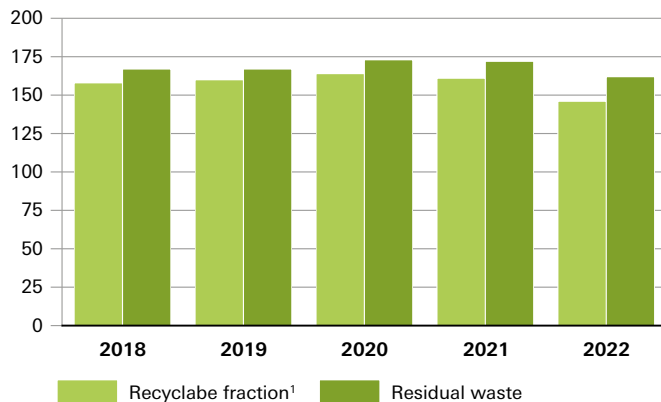


Rate of connection* to public water supply and wastewater treatment in Bavaria since 1995 in percent



* Connected residents in percent of total population.

Household waste and commercial municipal waste in Bavaria since 2018, kilogram per resident



¹ Without processed slag and scrap from waste incineration plants.

EXPLANATORY NOTES

- 0 more than zero but less than half of the smallest digit shown in the table
- no figures or no alteration
- / no data because the numerical value is not sufficiently reliable
- numerical value unknown, confidential or not calculable
- ... data will be available later on
- x cell blocked for logical reasons
- () limited informational value because the numerical value is of limited statistical reliability
- p provisional numerical value
- r corrected numerical value
- s estimated numerical value
- D average
- ≙ corresponds to

ROUNDING

Generally, totals were not considered in rounding up or down. As a result, minor deviations from the reported totals may occur when individual figures are summed up. When totals are shown as a percentage, the sum of the individual figures may differ from 100 % due to rounding. In general the sum of percentages is not adjusted in order to be 100 %.

ABBREVIATIONS

- € euro
- EU European Union
- ALC municipalities/municipal associations
- ha hectare (10,000 m²)
- hl hectolitres (100 litres)
- mn million
- % percent
- km² square kilometre
- m² square metre
- pcs. piece
- TJ 10¹² Joules
- t tonne